

Disable WPS security

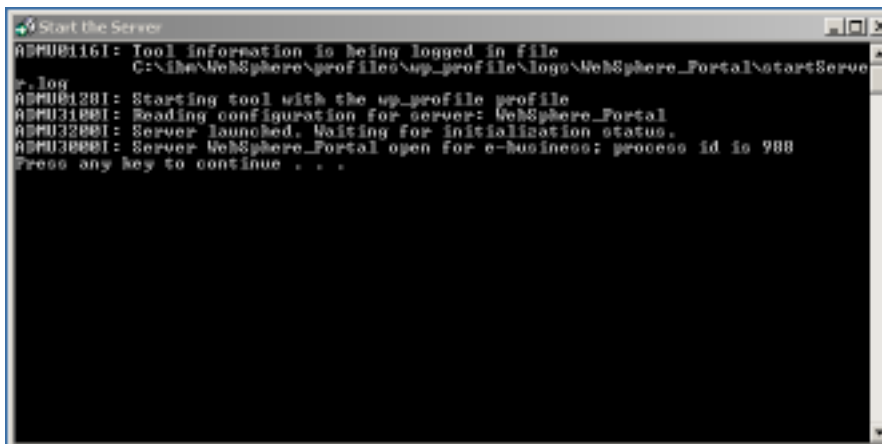
Now, to make WPS use Domino LDAP we have to turn off WPS security and reconfigure it. In order to do that, we are going to run some of the config wizards. These are wizards that allow you to reconfigure some of the core functions of WPS. There are usually many options you can use to reconfigure WPS, and from time to time, you may have to run the same wizard again, so there are **HELPER** files to assist the administrator. These are text files that “feed” the wizard with defaults you have entered (you can keep the helper file and reuse it another time). Don’t be afraid of them, they are there to help you!.

Configuring the disable security helper file



Start the WPS Server

When the server is up and running, you will see the following screen.

A screenshot of a Windows command prompt window titled "Start the Server". The window has a black background with white text. The text shows the following log entries:

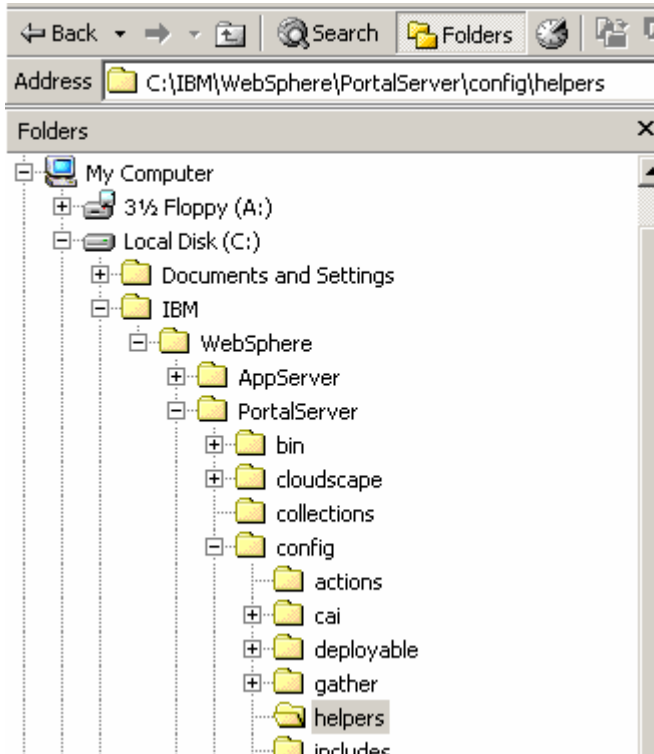
```
ASP081161: Tool information is being logged in file  
C:\ibe\WebSphere\profiles\wp_profile\logs\WebSphere_Portal\startServe  
r.log  
ASP081281: Starting tool with the wp_profile profile  
ASP031001: Reading configuration for server: WebSphere_Portal  
ASP032001: Server launched. Waiting for initialization status.  
ASP030001: Server WebSphere_Portal open for e-Business; process id is 988  
Press any key to continue . . .
```

Paul Mooney
Pmooney.net

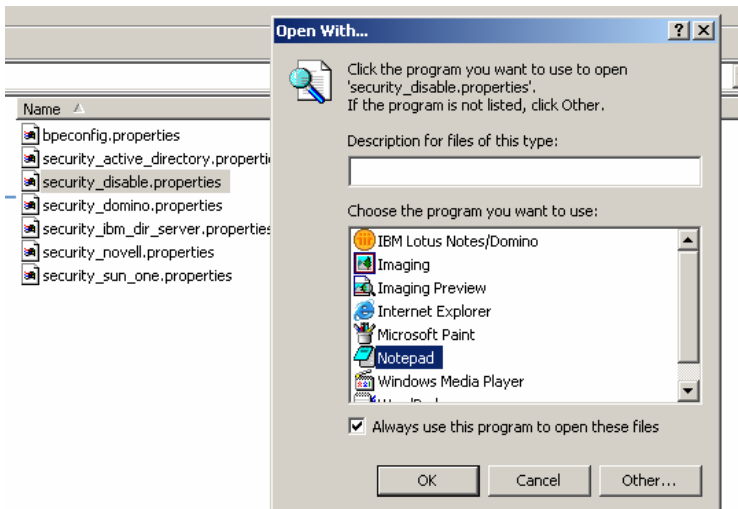
Configuring WPS for Domino LDAP Security
Redistribute with attribution only

Press a key to continue.

Go to the **C:\IBM\WebSphere\PortalServer\config\helpers** folder



Open the **security_disable.properties** file with notepad



Most of this file is blank (it is always good to keep a backup of the blank files, for future use) in the sense that the configurations are here, but without parameters. We are going to add a few parameters. Search for and amend the following lines

PortalAdminId=**wpsadmin**

PortalAdminPwd=**lotusnotes**

PortalAdminGroupId=**wpsadmins**

Wmm.DbPassword=**lotusnotes**

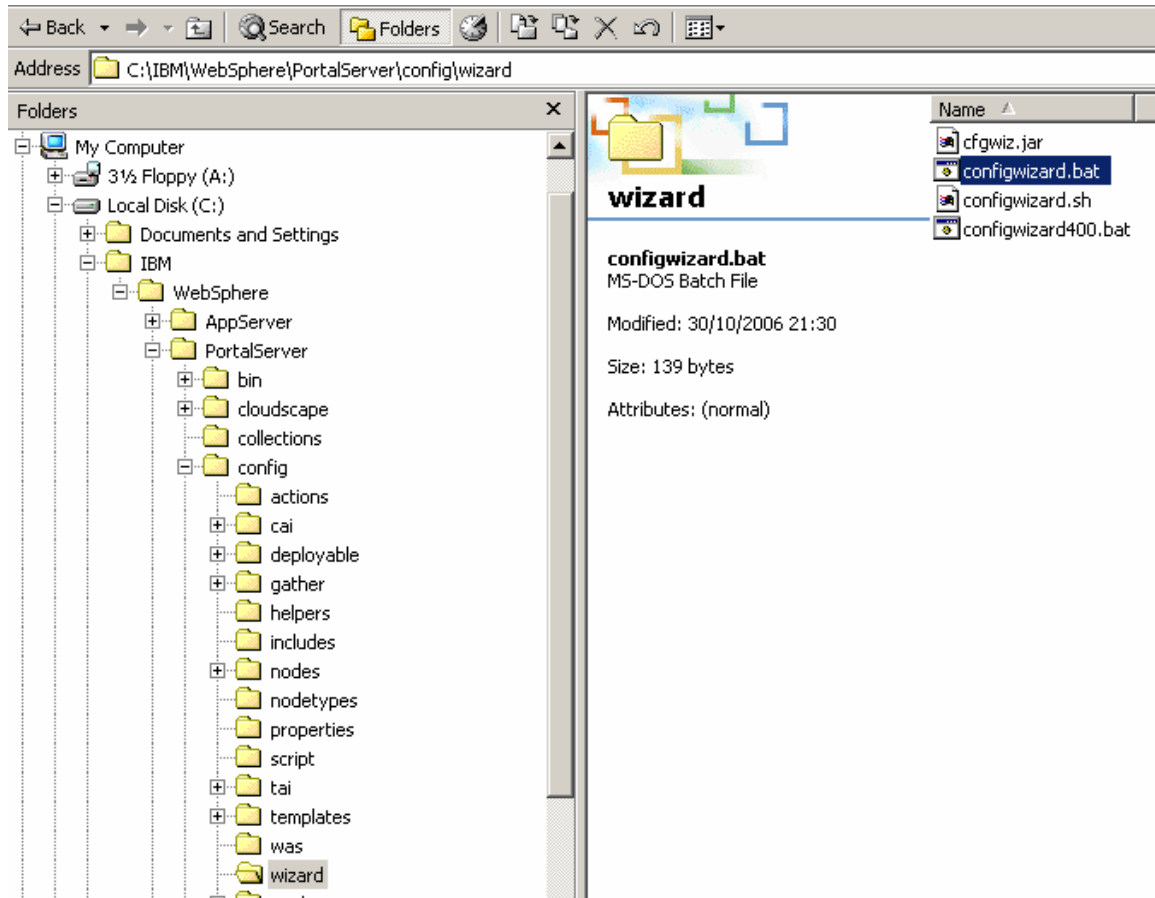
WasPassword=**lotusnotes**

```
#####  
# Portal Config Properties - BEGIN  
#####  
  
# PortalAdminId: The user ID for the websphere Portal Administrator  
# DEV (No security): PortalAdminId=uid=wpsadmin,o=default organization  
PortalAdminId=wpsadmin  
  
# PortalAdminPwd: The password for the websphere Portal Administrator  
PortalAdminPwd=lotusnotes  
  
# PortalAdminGroupId: The group ID for the websphere Portal Administrator group  
# DEV (No security): PortalAdminGroupId=<portaladmingroupid>  
PortalAdminGroupId=wpsadmins  
  
#####  
# Portal Config Properties - END  
#####  
  
#####  
# Database Properties - BEGIN  
#####  
  
# Connection information for wmm db will be acquired from  
# wpconfig_dbdomain.properties and wpconfig_dbtype.properties  
# DbPassword: The database administrator password  
wmm.DbPassword=lotusnotes  
  
#####  
# Database Properties - END  
#####  
  
#####  
# WebSphere Application Server Properties - BEGIN  
#####  
  
# wasuserid will be acquired from wpconfig.properties.  
# WasPassword: The password for websphere Application Server security authentication (LDAP and CUR)  
wasPassword=lotusnotes
```

Save the file and close it

Run the Disable Security Wizard

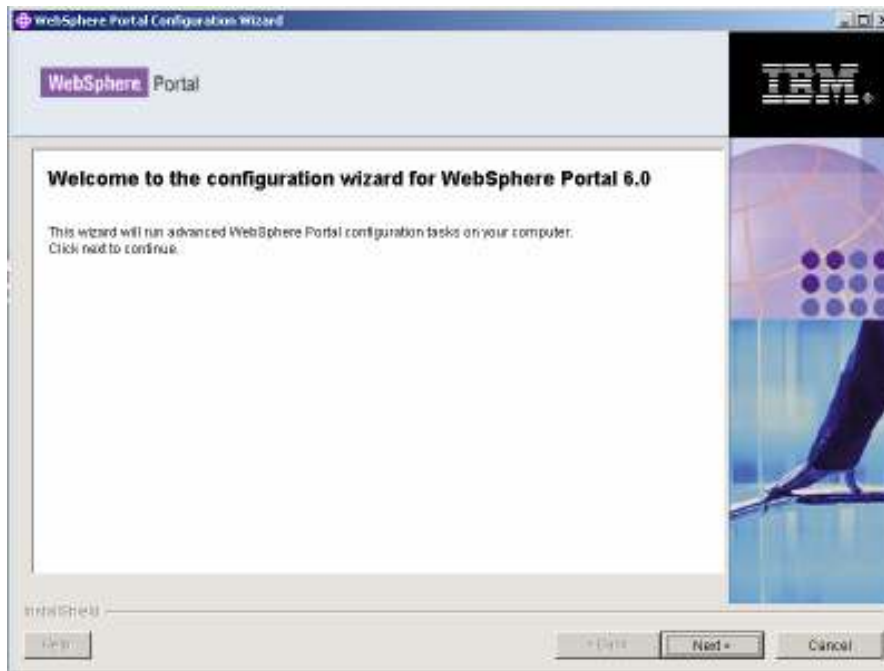
Go to the `C:\IBM\WebSphere\PortalServer\config\wizard` directory and run the **ConfigWizard.bat** file.



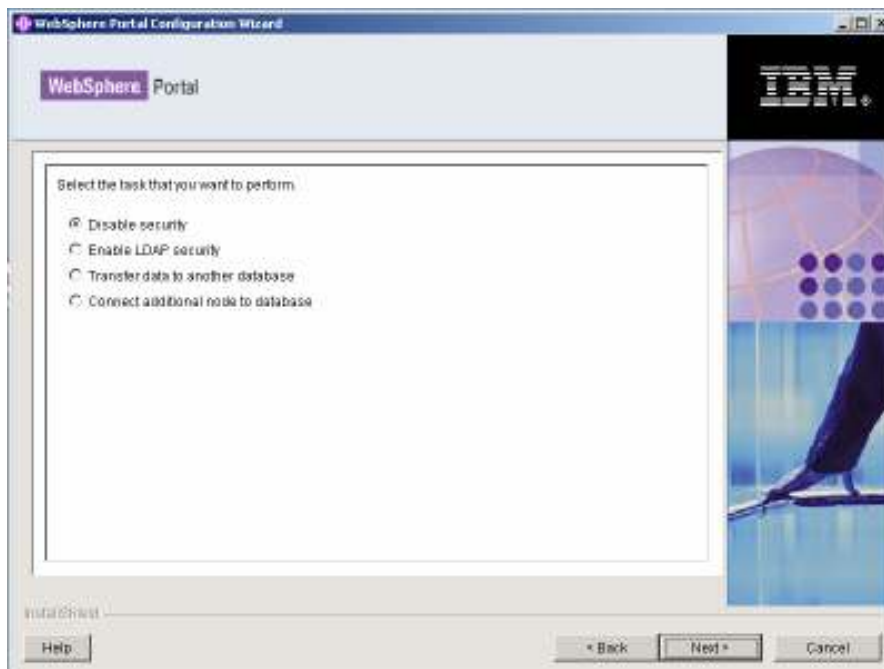
The wizard will ask you to choose a language – In our case, we are choosing **English**.



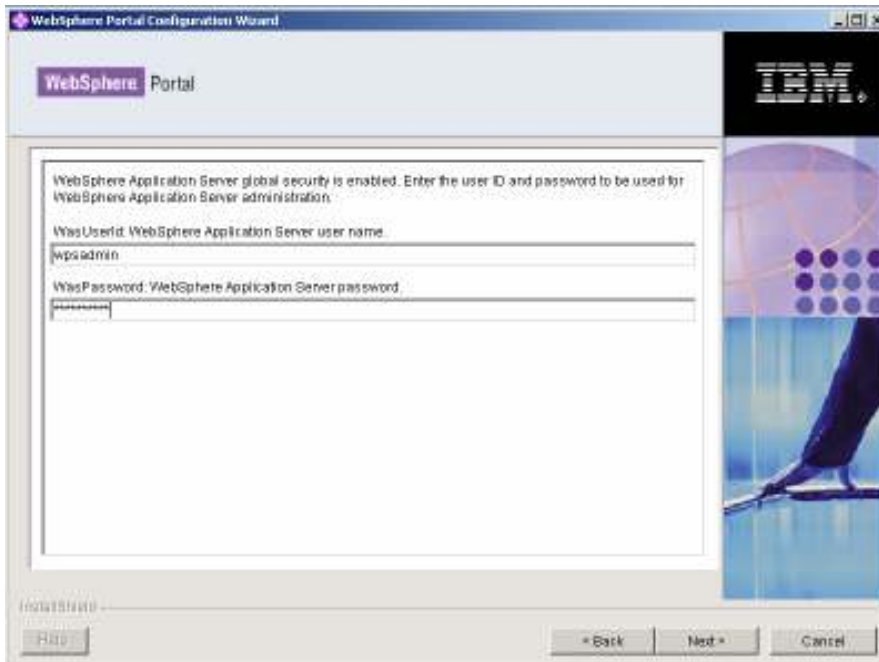
Click **Next** at the following screen:



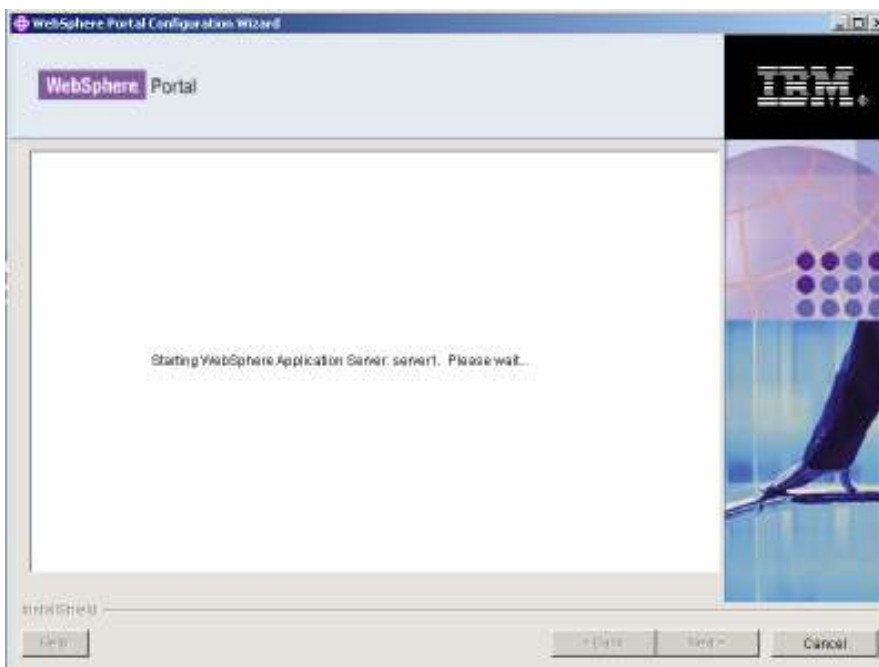
Choose **Disable Security** and click on **next** at the following screen



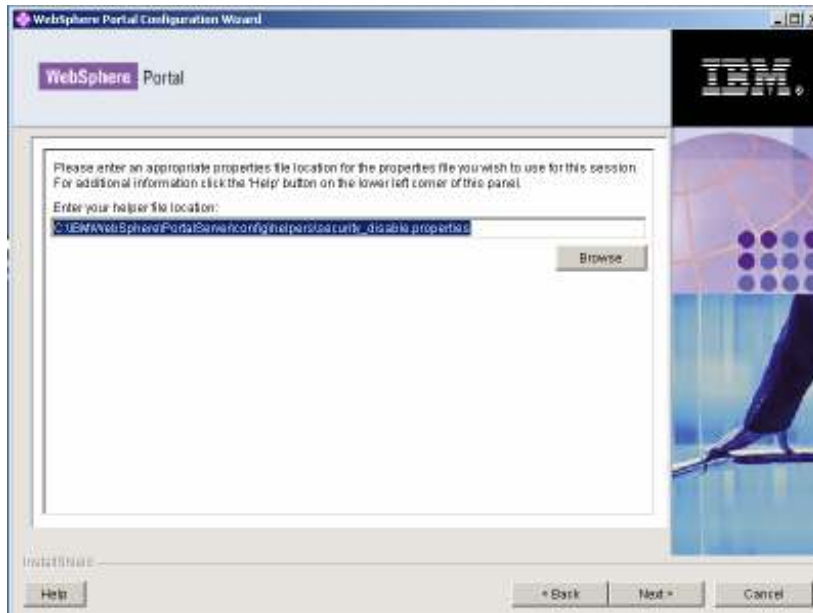
Wpsadmin should already be in the WASUSERID field. **Enter the password (lotusnotes)** and click on **next**



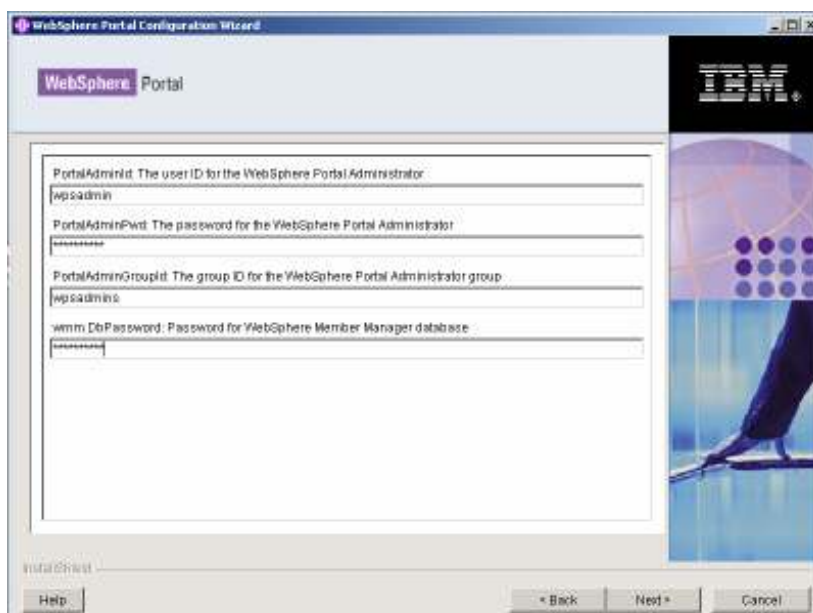
The default server (consider it the "Administration server" of Websphere Application Server) "server1", is now started for you.



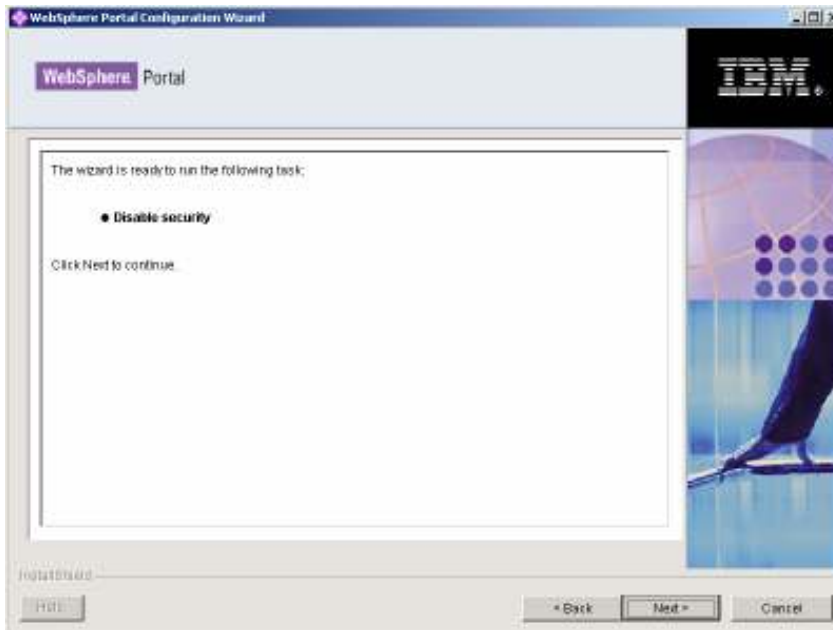
When it starts, it will ask you **to choose the Helper file** you created earlier. **Ensure the path is correct (C:\IBM\WebSphere\PortalServer\config\helpers\security_disable.properties)** and click on **NEXT**



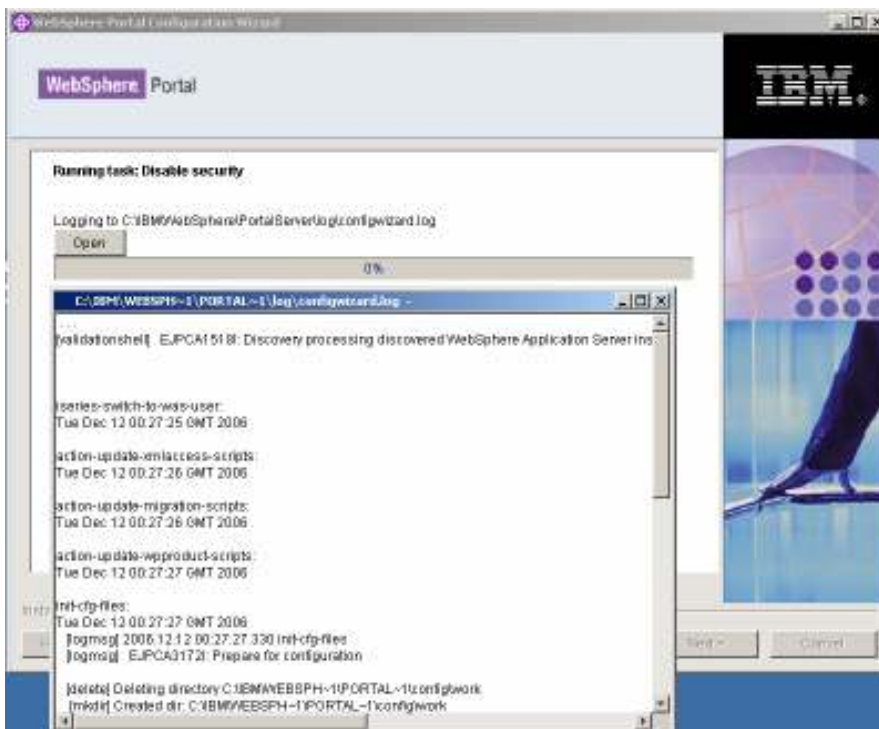
As you can see, the helper file populates most of the information for you. **Enter in the wmm.DbPassword (lotusnotes)** in the bottom field and click on **NEXT**



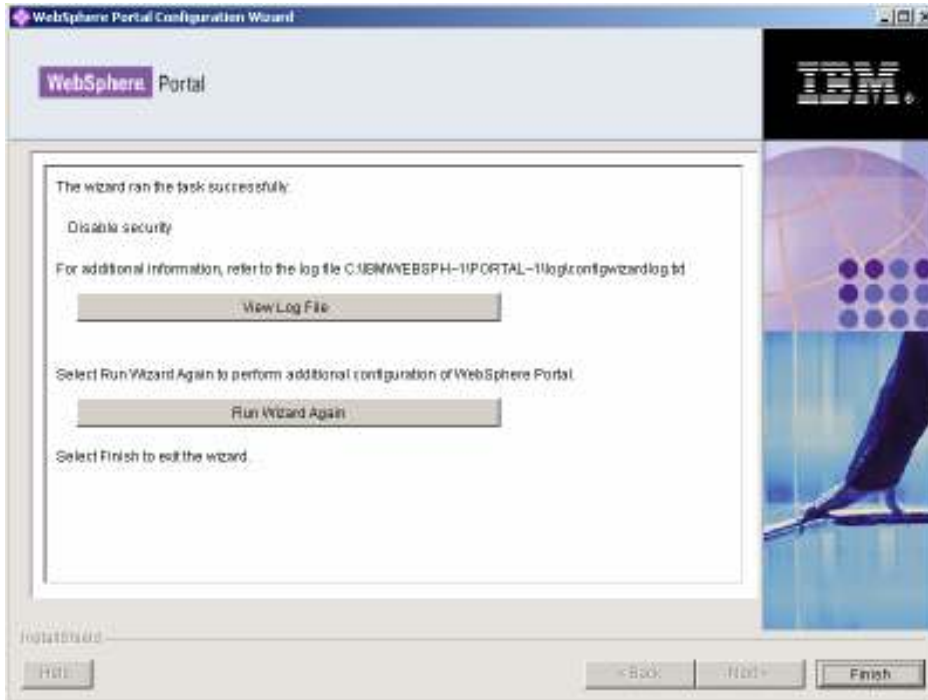
You should get the confirmation screen (below). Click on **NEXT**.



When the wizard is running, it will record all of its work to a log file.
You can open it at any time by clicking on the "OPEN" button.



This wizard will take some time to complete. When finished, you should see the following screen.



Click on **FINISH**

Now, move to the next step.

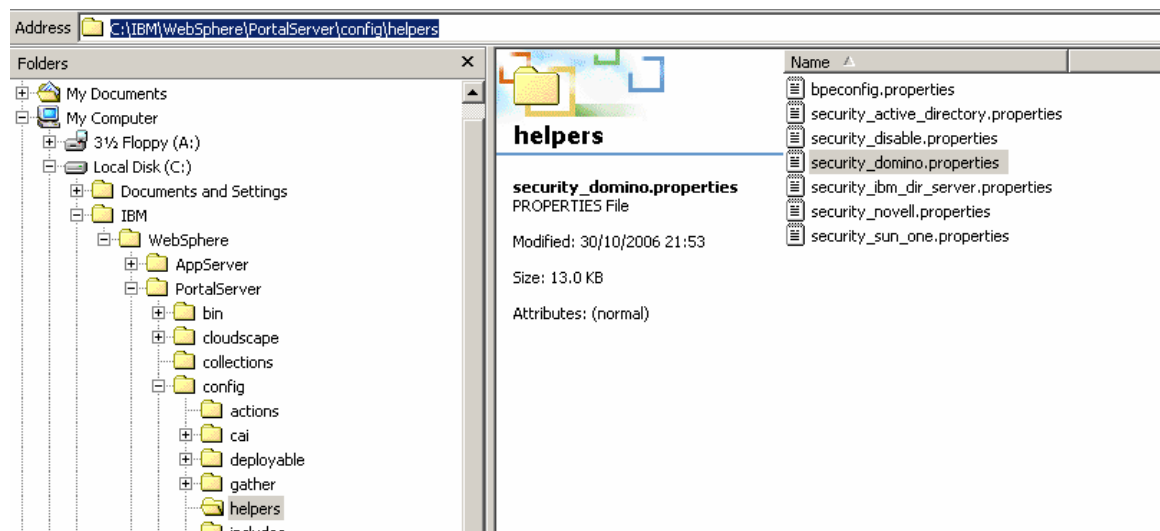
Enable WPS Security to Domino LDAP

OK... now WPS needs to be told about the Domino LDAP directory, and then the "enable security wizard" needs to be run. So, first things first, to make life easier, we are going to use a helper file and pre-populate information about the domino LDAP directory, then reference that file during the wizard.

Configure the Enable security Helper file

There is a helper file specifically for enabling security with Domino LDAP. Navigate to

C:\IBM\WebSphere\PortalServer\config\helpers and **open the security_domino.properties file** with notepad.



We are going to use the Wpsadmin/demo account we created earlier as the account that WPS can use for communicating with Domino LDAP. The following table lists on the left hand side, the parameter to search for and on the right hand side, the value to enter. **ENSURE YOU HAVE THE VALUES CORRECTLY ENTERED.** Here is where the helper files are useful – you can pre-populate them and re-run the wizards if you make a mistake.

Parameter	Value
WasUserid=	cn=wpsadmin,O=demo
WasPassword=	lotusnotes
wmm.DbPassword=	lotusnotes
PortalAdminId=	cn=wpsadmin,O=demo
PortalAdminPwd=	lotusnotes
PortalAdminGroupId=	CN=wpsadmins
LTPAPassword=	lotusnotes
SSODomainName=	demo.local
LookAside=	true
LDAPHostName=	portal.demo.local
LDAPAdminUIId=	cn=wpsadmin,O=demo
LDAPAdminPwd=	lotusnotes
LDAPBindID=	cn=wpsadmin,O=demo
LDAPBindPassword=	lotusnotes
LDAPUserSuffix=	O=demo

Save and close the file when finished

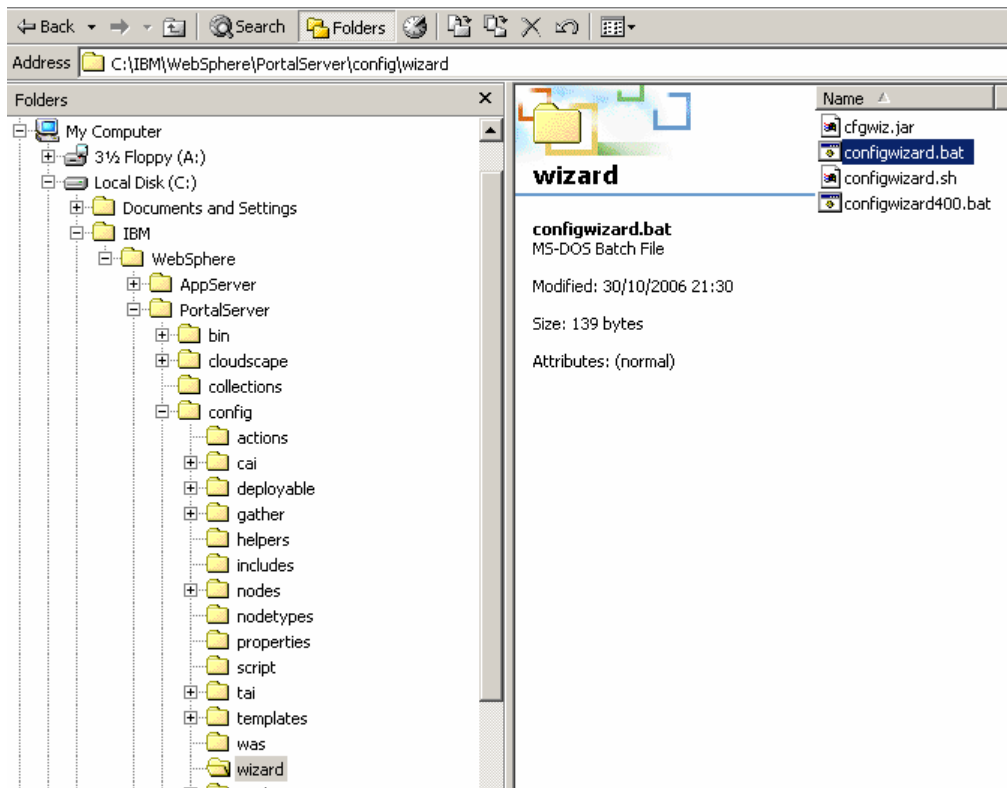
Once complete, **start the domino server** so the LDAP server is available before you run the wizard.

Run the Enable Security Wizard

Make sure your domino server is now running!

Now, navigate to

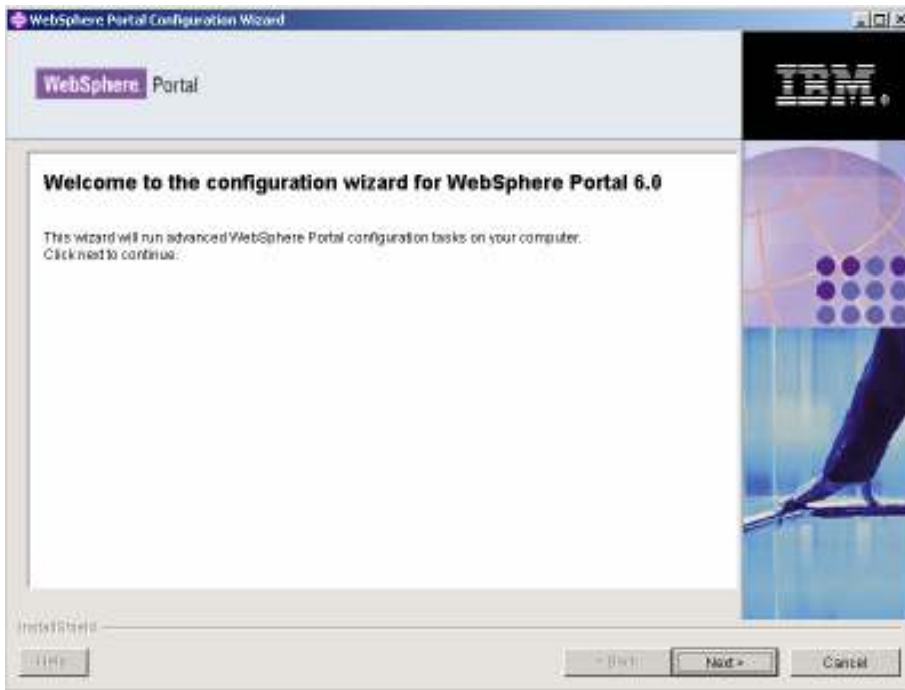
C:\IBM\WebSphere\PortalServer\config\wizard and run the **configwizard.bat** file again.



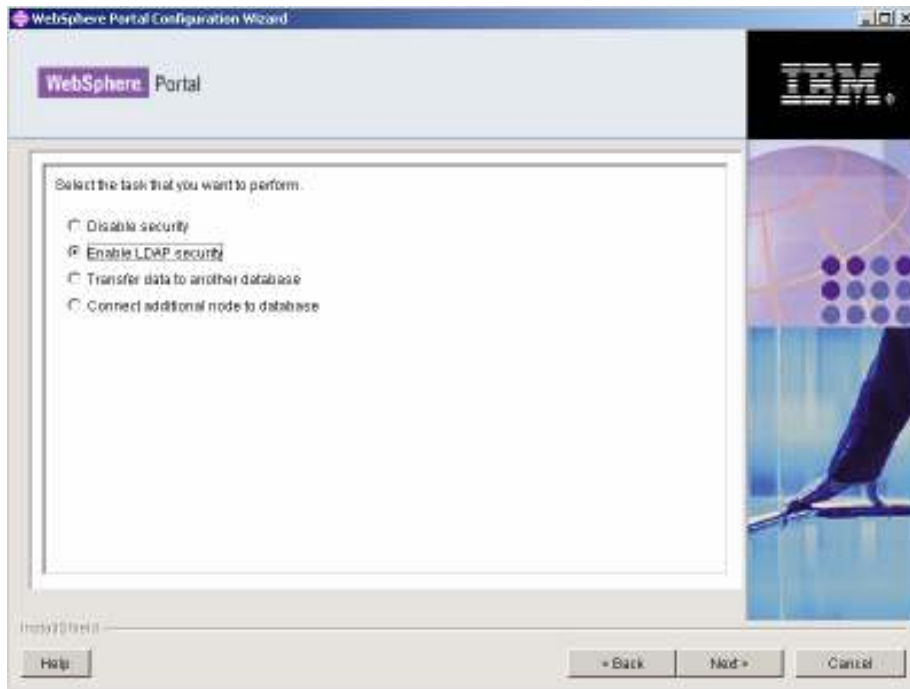
The wizard will ask you to choose a language – In our case, we are choosing **English**.



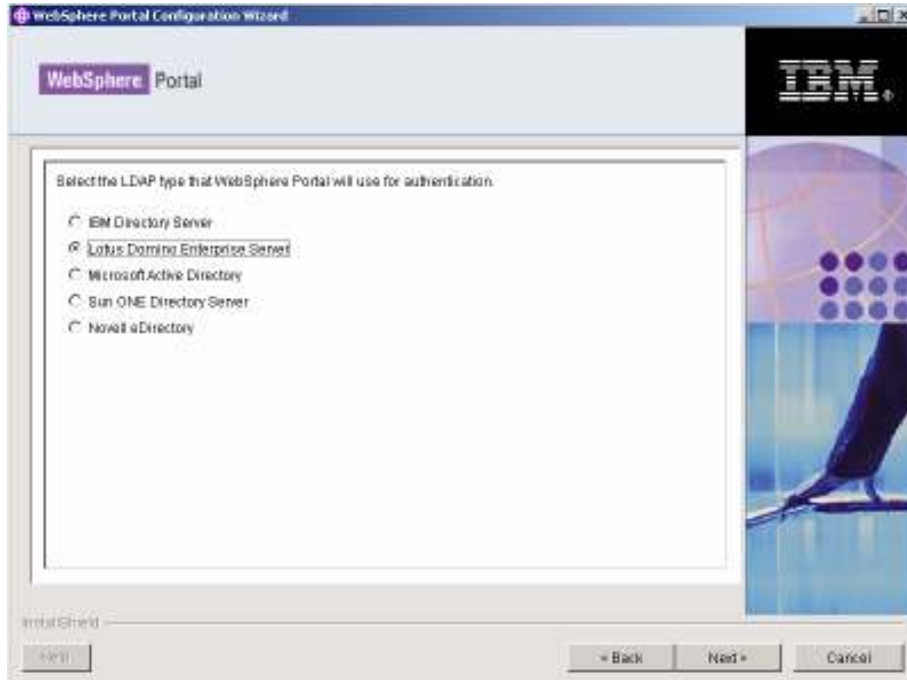
At the welcome screen below, click on **NEXT**



This time, we choose the **ENABLE LDAP SECURITY** option and click on **NEXT**



You are asked to choose which LDAP directory type are you connecting to. Choose **LOTUS DOMINO ENTERPRISE SERVER** and click on **NEXT**.

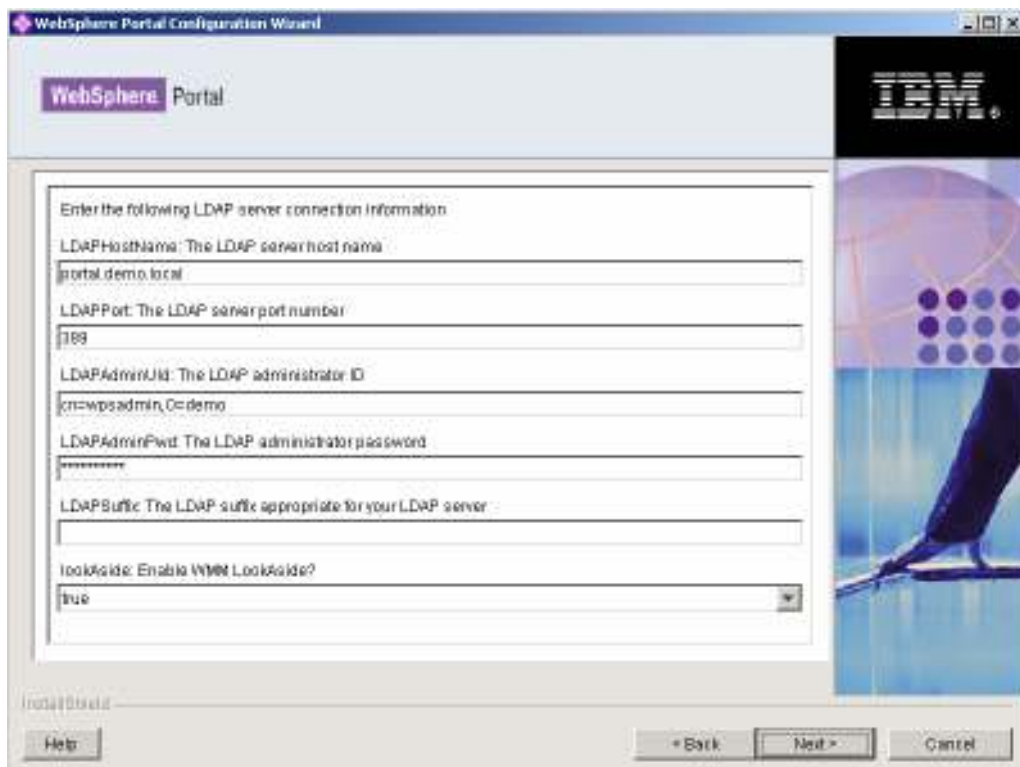


Now, WPS will ask you for the location of the helper file you have modified. The default is
**C:\IBM\WebSphere\PortalServer\config\helpers\security_
domino.properties.**

Select **NEXT**.

On the next screen. **Ensure the parameters are filled in as follows:**

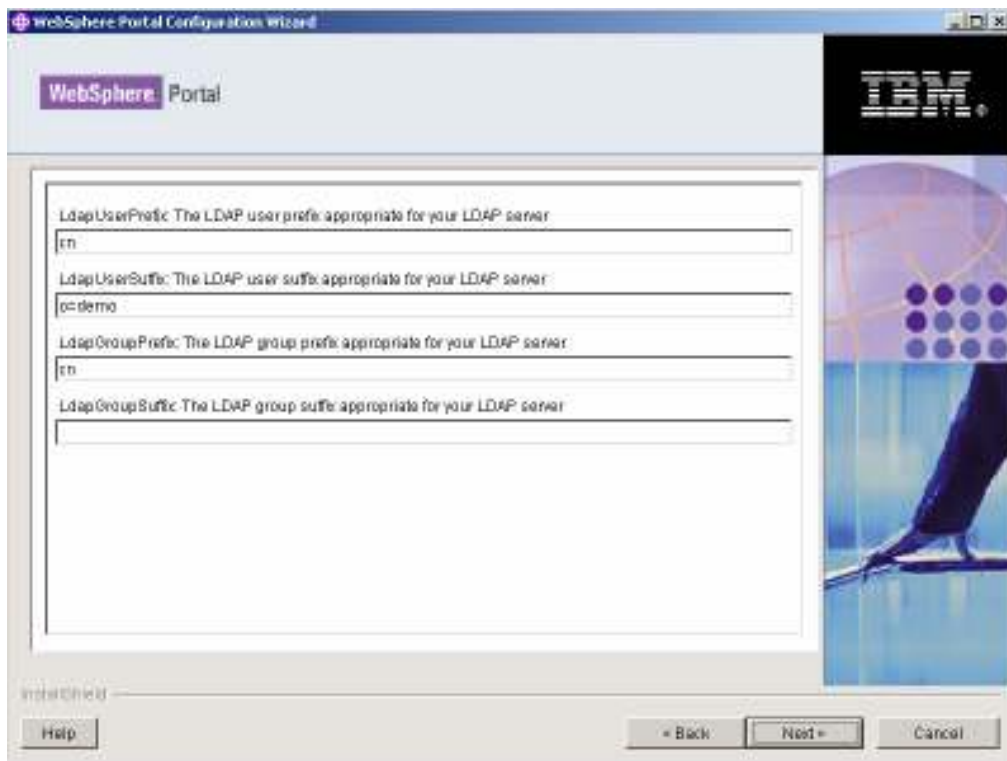
Parameter	Value
LDAP HOST NAME	Portal.demo.local
LDAP PORT	389
LDAP ADMIN UID	cn=wpsadmin,O=demo
LDAPADMIN PWD	lotusnotes
LDAP SUFFIX	
LOOKASIDE	True



Click on **NEXT**

On the next screen. **Ensure the parameters are filled in as follows:**

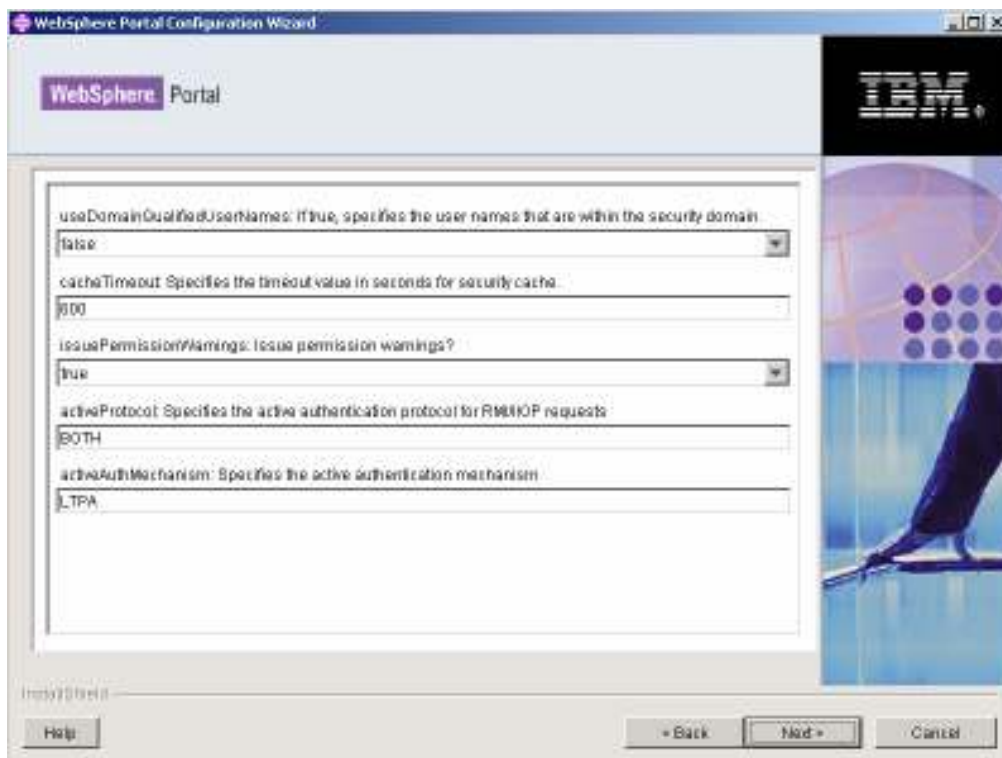
Parameter	Value
LDAPUSERPREFIX	Cn
LDAPUSERSUFFIX	O=demo
LDAPGROUPPREFIX	Cn
LDAPGROUPSUFFIX	



Click on **NEXT**

On the next screen. **Ensure the parameters are filled in as follows:**

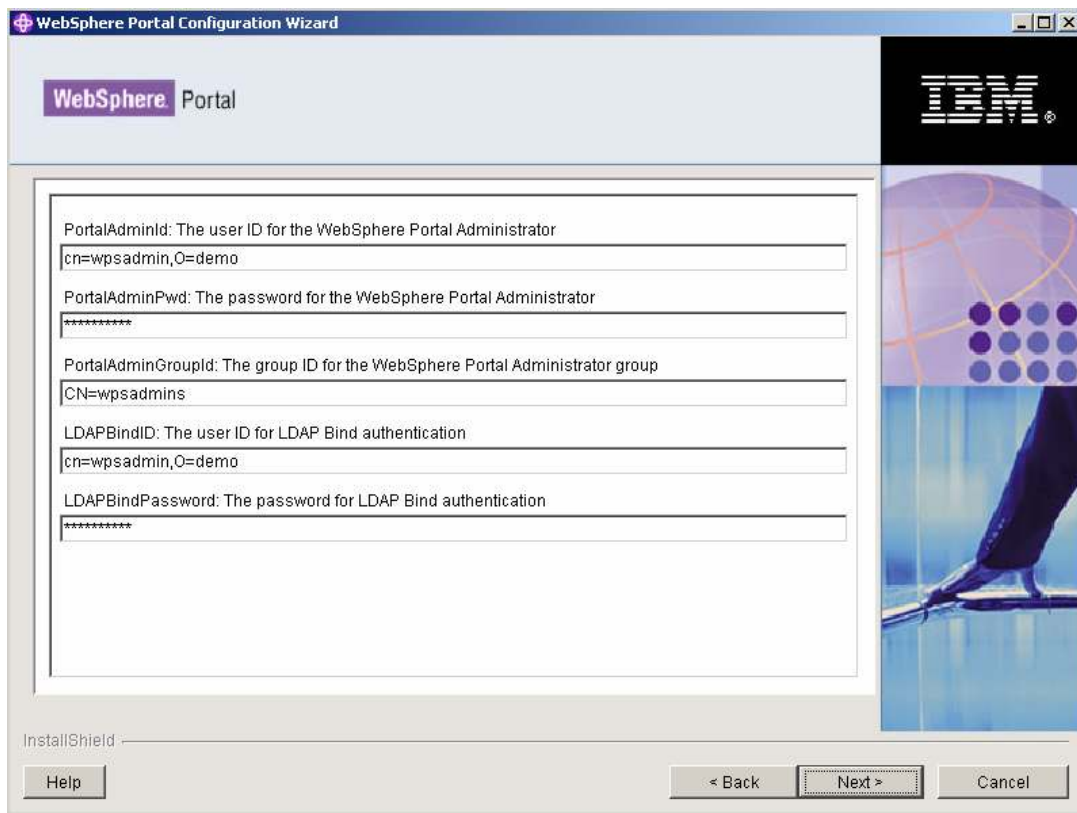
Parameter	Value
USERDOMAINQUALIFIEDUSERNAMES	False
CACHETIMEOUT	600
ISSUEPERMISSIONWARNINGS	True
ACTIVEPROTOCOL	BOTH
ACTIVEAUTHMECHANISM	LTPA



Click on **NEXT**

On the next screen. Ensure the parameters are filled in as follows:

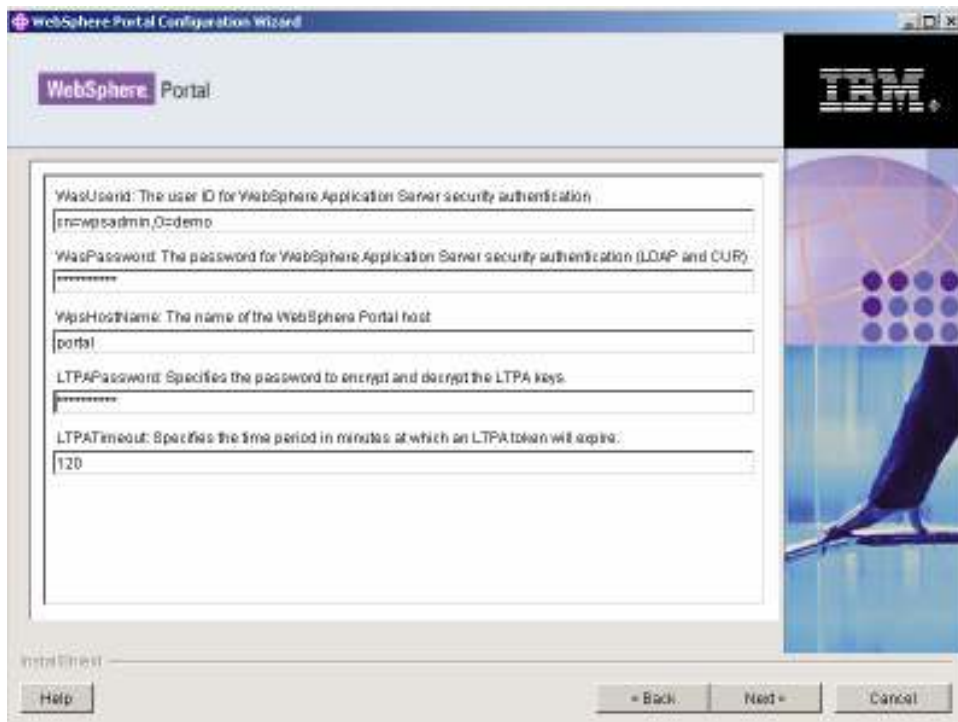
Parameter	Value
PORTALADMINID	Cn=wpsadmin,O=demo
PORTALADMINPWD	lotusnotes
PORTALADMINGROUPID	CN=wpsadmins
LDAPBINDID	Cn=wpsadmin,O=demo
LDAPBINDPASSWORD	lotusnotes



Click on **NEXT**

On the next screen. **Ensure the parameters are filled in as follows:**

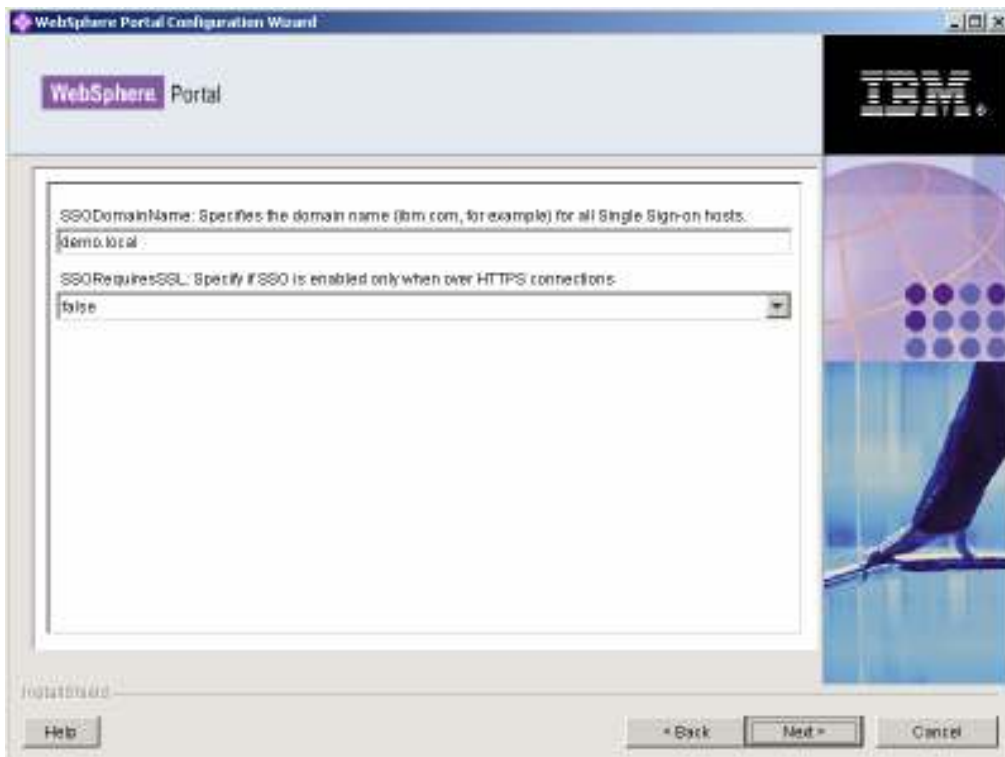
Parameter	Value
WASUSERID	cn=wpsadmin,O=demo
WASPASSWORD	lotusnotes
WPSHOSTNAME	portal
LTPAPASSWORD	lotusnotes
LTPATIMEOUT	120



Click on **NEXT**

On the next screen. **Ensure the parameters are filled in as follows:**

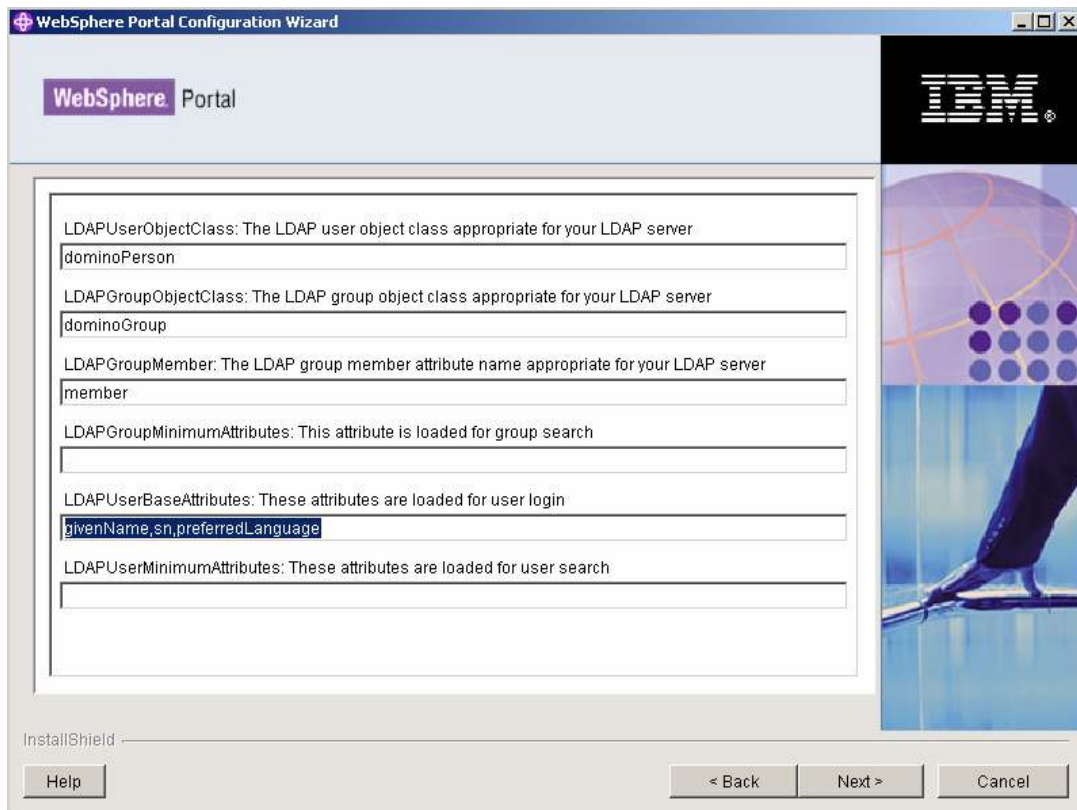
Parameter	Value
SSODOMAINNAME	portal.local
SSOQUIRESSSL	false



Click on **NEXT**

On the next screen. **Ensure the parameters are filled in as follows:**

Parameter	Value
LDAPUSEROBJECTCLASS	dominoPerson
LDAPGROUPOBJECTCLASS	dominoGroup
LDAPGROUPMEMBER	member
LDAPGROUPMINIMUMATTRIBUTES	
LDAPUSERBASEATTRIBUTES	givenName,sn,preferredLanguage
LDAPUSERMINIMUMATTRIBUTES	



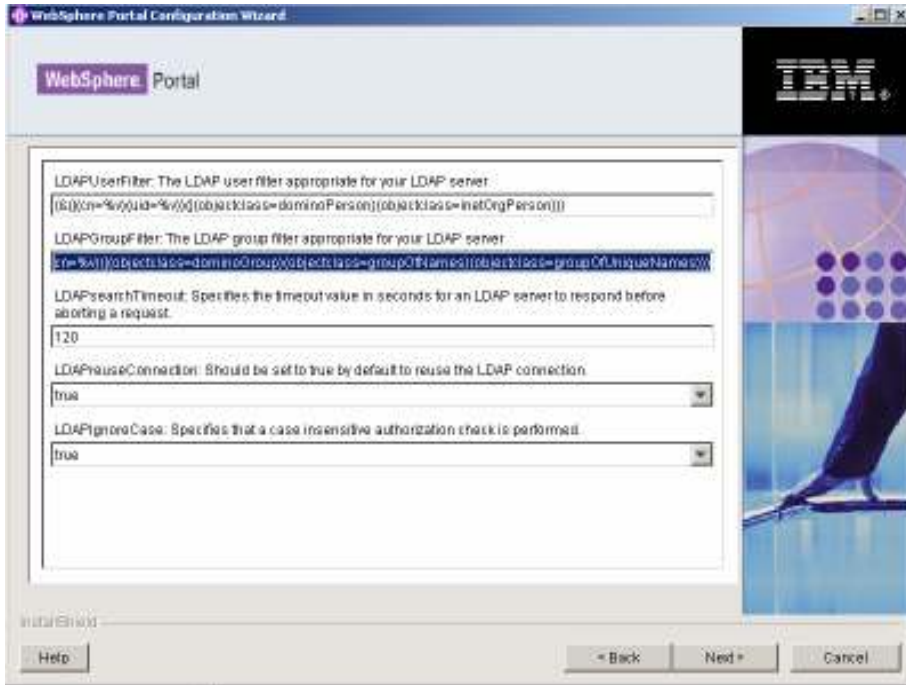
Paul Mooney
Pmooney.net

Configuring WPS for Domino LDAP Security
Redistribute with attribution only

Click on **NEXT**

On the next screen. **Ensure the parameters are filled in as follows:**

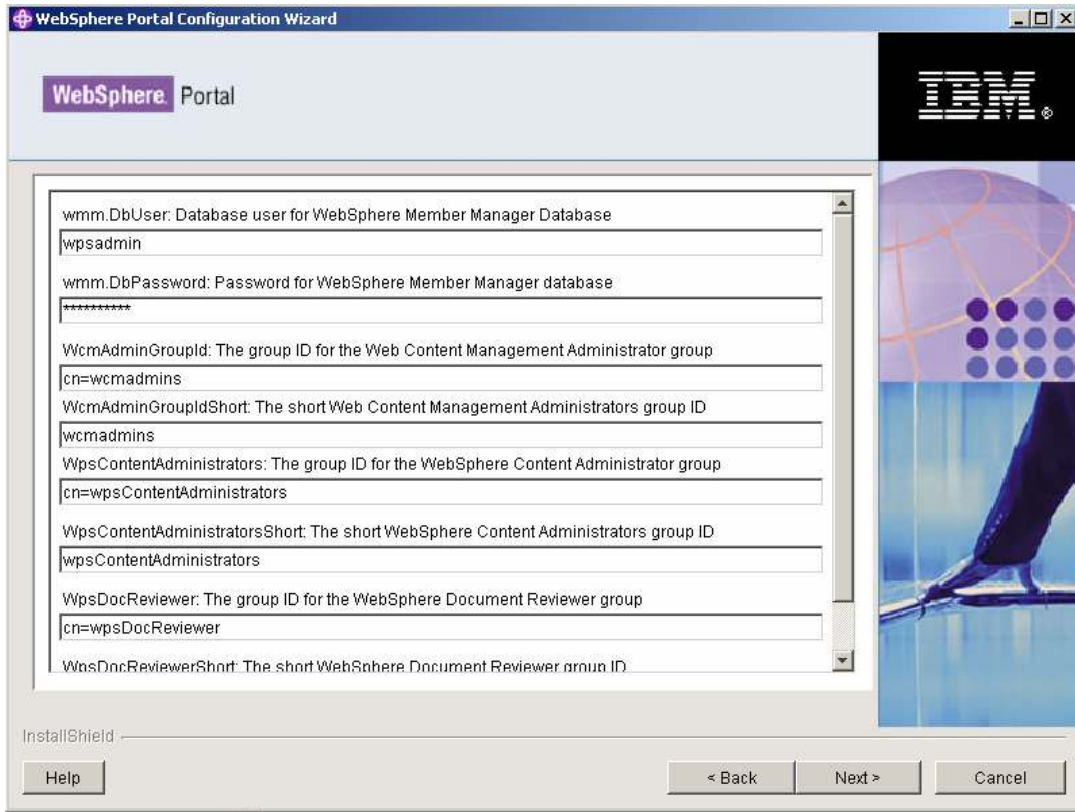
Parameter	Value
LDAPUSERFILTER	(&((cn=%v)(uid=%v))((objectclass=dominoPerson)(objectclass=inetOrgPerson))) DEFAULT IS FINE
LDAPGROUPFILTER	(&(cn=%v)((objectclass=dominoGroup)(objectclass=groupOfNames)(objectclass=groupOfUniqueNames))) DEFAULT IS FINE
LDAPSEARCHTIMEOUT	120
LDAPREUSECONNECTI ON	True
LDAPIGNORECASE	True



Click on **NEXT**

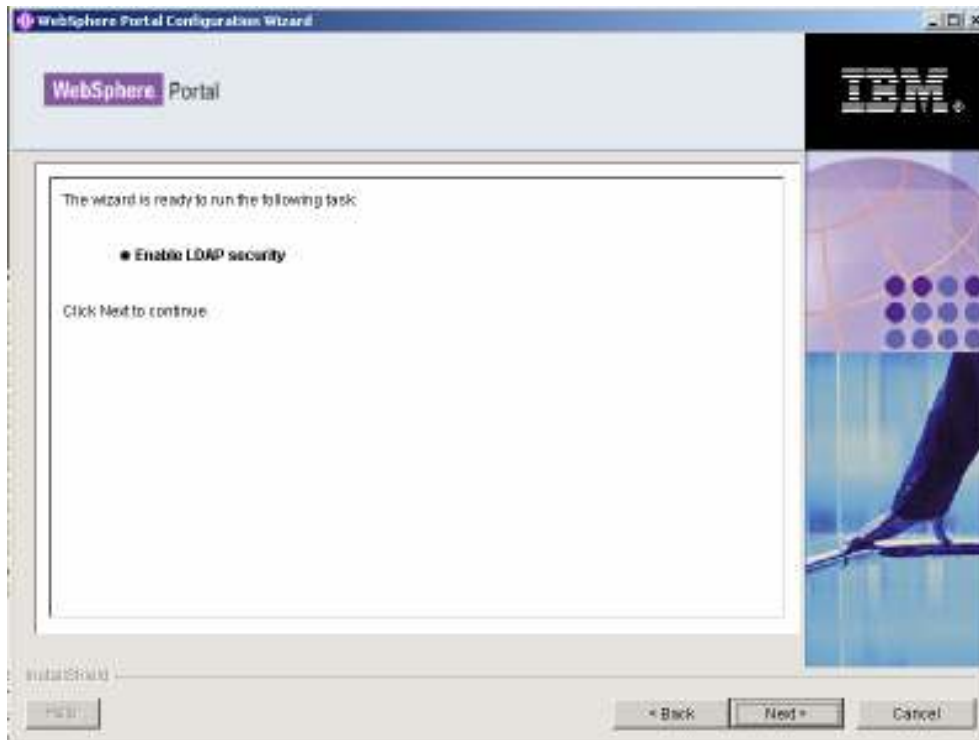
On the next screen. **Ensure the parameters are filled in as follows:**

Parameter	Value
WMM.DBUSER	wpsadmin
WMM.DBPASSWORD	lotusnotes
WCMADMINGROUPID	cn=wcmadmins
WCMADMINGROUPIDSHORT	wcmadmins
WPSCONTENTADMINISTRATORS	cn=wpsContentAdministrators
WPSCONTENTADMINISTRATORSHORT	wpsContentAdministrators
WPSDOCREVIEWER	cn=wpsDocReviewer
WPSDOCREVIEWERSHORT	wpsDocReviewer



Click on **NEXT**

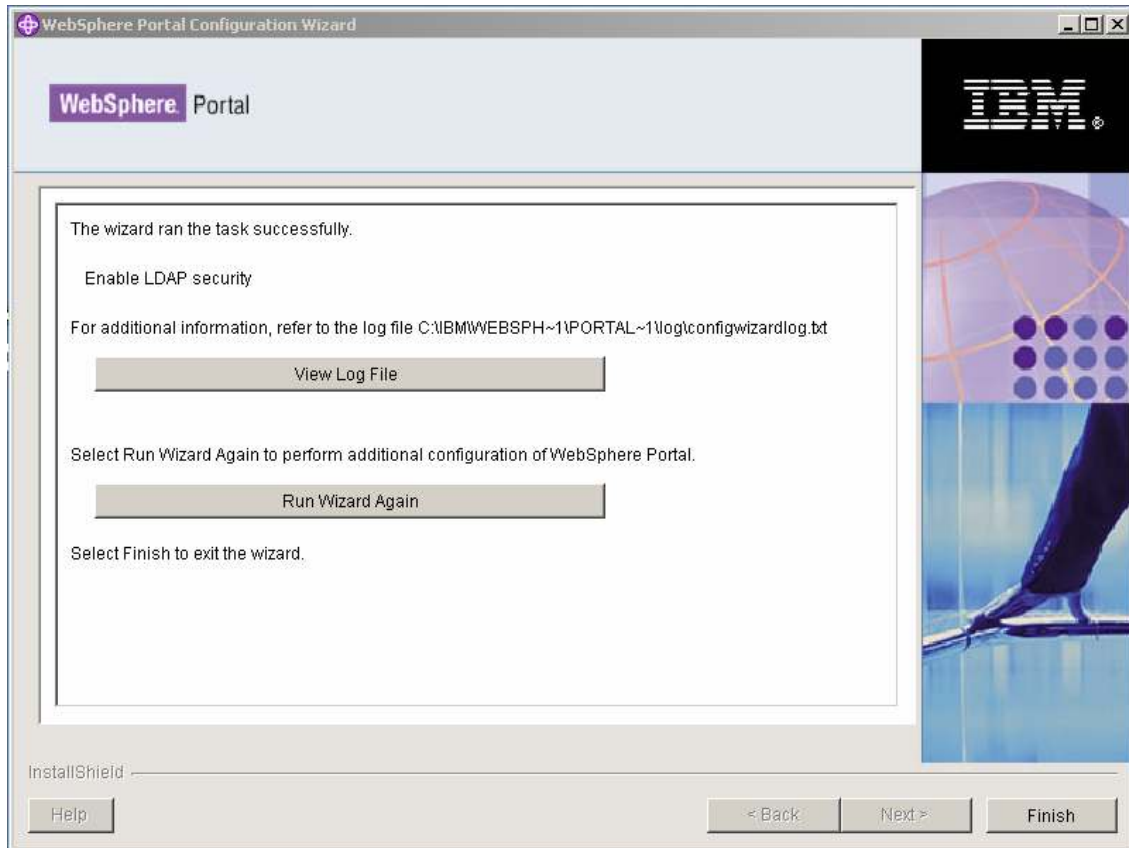
If all the information you enter is accepted, you should see the following screen:



Click on **NEXT**.

Note that this script will take a while.

If it was successful, you will see this on the screen



Now, **bear in mind that WPS now REQUIRES Domino LDAP to run, therefore Domino LDAP must always be available. Stop the Portal Server** now (you will have to enter the user name and password) . **Stop the Domino server** and now is a good time to **restart the Operating System.**