

# Dummies guide to moving a BES server

Paul Mooney

[www.pmooney.net](http://www.pmooney.net)

[www.bluewave.ie](http://www.bluewave.ie)

Dummies guide to moving a BES server .....	1
1.0 Introduction .....	2
1.1 Objective .....	2
1.2 In the beginning.....	2
2.0 Danger points! .....	3
2.1 First thing to remember.....	3
2.2 Second thing to remember.....	3
2.3 Third thing to remember .....	3
3.0 Lets get started.. .....	4
3.1 First thing to do. ....	4
3.2 Second thing to do.....	6
3.3 Third thing to do.....	6
4.0 Onto the new server.....	7
4.1 Install BES (again) .....	8
4.2 Importing the old database onto the new installation.....	8
4.4 Copy in the MDF files.....	10
4.5 Attach the database you created.....	10
4.6 Tell BES to use the other database.....	11
4.7 Configure Data Source .....	13

## 1.0 Introduction

Ok – I wanted to put this together as a guide on how to migrate the most typical Domino installation of BES server. This is how to do it... Of course I TAKE NO RESPONSIBILITY ON THIS CAUSING ANY DATA LOSS OR BEING INCORRECT IN ANY WAY.

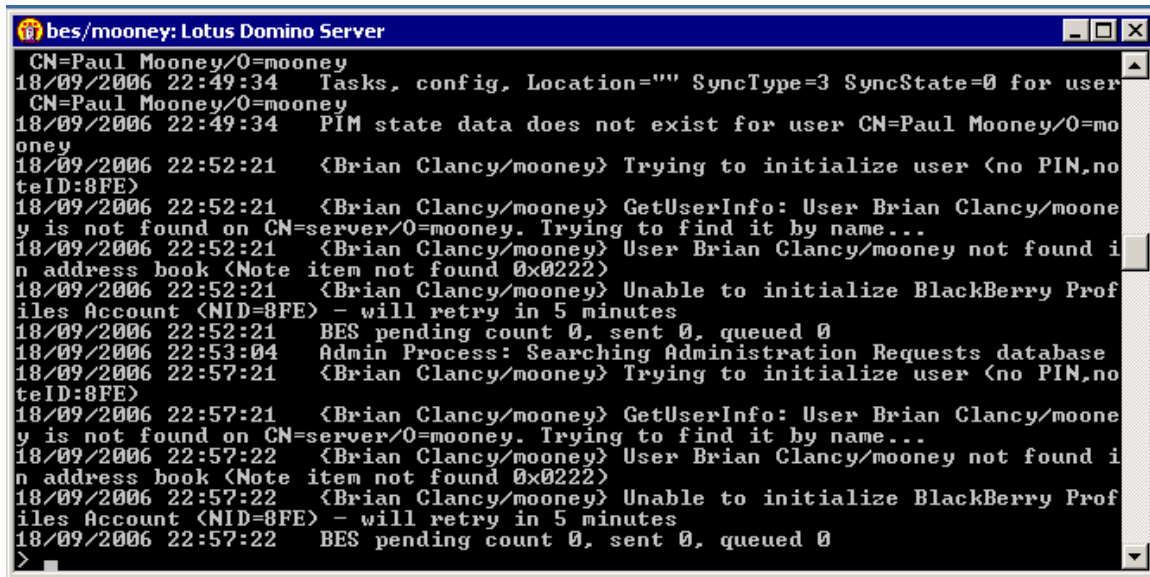
Running a Domino 654 server on Windows 2000 Server SP4  
BES overlay install (4.1.1) running the MS SQL Desktop Edition (the free one that comes with BES).

### 1.1 Objective

Move the BES to a new Domino server, without affecting users (except for downtime of the move of course). This is the same “Domino” server, but you have moved it to new OS/hardware etc.

### 1.2 In the beginning

This is the server that is currently running... Original names eh?



```
bes/mooney: Lotus Domino Server
CN=Paul Mooney/0=mooney
18/09/2006 22:49:34 Tasks, config, Location="" SyncType=3 SyncState=0 for user
CN=Paul Mooney/0=mooney
18/09/2006 22:49:34 PIM state data does not exist for user CN=Paul Mooney/0=mooney
18/09/2006 22:52:21 <Brian Clancy/mooney> Trying to initialize user (no PIN, no
teID:8FE)
18/09/2006 22:52:21 <Brian Clancy/mooney> GetUserInfo: User Brian Clancy/mooney
is not found on CN=server/0=mooney. Trying to find it by name...
18/09/2006 22:52:21 <Brian Clancy/mooney> User Brian Clancy/mooney not found i
n address book (Note item not found 0x0222)
18/09/2006 22:52:21 <Brian Clancy/mooney> Unable to initialize BlackBerry Prof
iles Account (NID=8FE) - will retry in 5 minutes
18/09/2006 22:52:21 BES pending count 0, sent 0, queued 0
18/09/2006 22:53:04 Admin Process: Searching Administration Requests database
18/09/2006 22:57:21 <Brian Clancy/mooney> Trying to initialize user (no PIN, no
teID:8FE)
18/09/2006 22:57:21 <Brian Clancy/mooney> GetUserInfo: User Brian Clancy/mooney
is not found on CN=server/0=mooney. Trying to find it by name...
18/09/2006 22:57:22 <Brian Clancy/mooney> User Brian Clancy/mooney not found i
n address book (Note item not found 0x0222)
18/09/2006 22:57:22 <Brian Clancy/mooney> Unable to initialize BlackBerry Prof
iles Account (NID=8FE) - will retry in 5 minutes
18/09/2006 22:57:22 BES pending count 0, sent 0, queued 0
>
```

## **2.0 Danger points!**

### ***2.1 First thing to remember..***

Ensure you have the software, SRP keys and all the ID keys you need before screwing with anything!

### ***2.2 Second thing to remember***

Do NOT run two BES servers using the same SRP key at ANY time. They will both be locked out and you will have to contact RIM to get them unlocked...

### ***2.3 Third thing to remember***

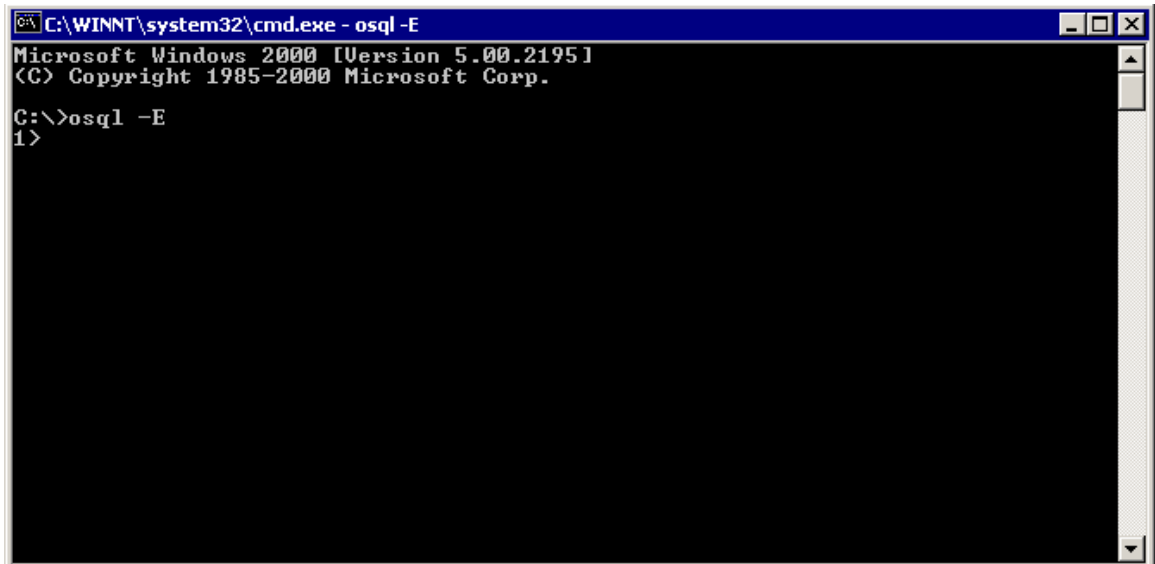
Run a complete and total backup of the original BES server BEFORE doing anything... Then disconnect the original BES from the network.

## 3.0 Lets get started..

### 3.1 First thing to do.

Take a backup of the MSDE database.

1. Open up a command prompt.
2. Type in “osql -E”. You should see the following:



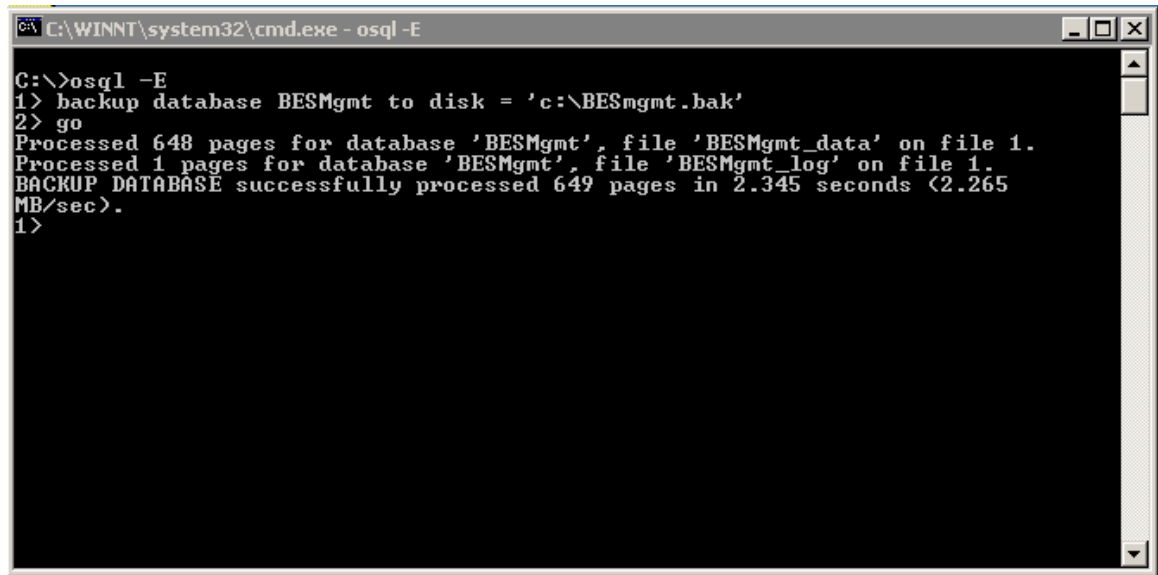
```
C:\WINNT\system32\cmd.exe - osql -E
Microsoft Windows 2000 [Version 5.00.2195]
(C) Copyright 1985-2000 Microsoft Corp.
C:\>osql -E
1>
```

3. Type in  
“Backup database DATABASENAME to disk = ‘c:\DATABASENAME.bak’

NB – DATABASENAME is usually BESMgmt.

## Moving a Bes Server

4. Type type in GO  
You should see the following:



```
C:\WINNT\system32\cmd.exe - osql -E
C:\>osql -E
1> backup database BESMgmt to disk = 'c:\BESmgmt.bak'
2> go
Processed 648 pages for database 'BESMgmt', file 'BESMgmt_data' on file 1.
Processed 1 pages for database 'BESMgmt', file 'BESMgmt_log' on file 1.
BACKUP DATABASE successfully processed 649 pages in 2.345 seconds (2.265
MB/sec).
1>
```

5. Type in Exit to close the session
6. Close the command prompt

### **3.2 Second thing to do**

Take a copy of the following files/directories from the existing BES server. You will need to stop the SQLserver service if you have not already. Place them in the “TEMP” folder on the new server.

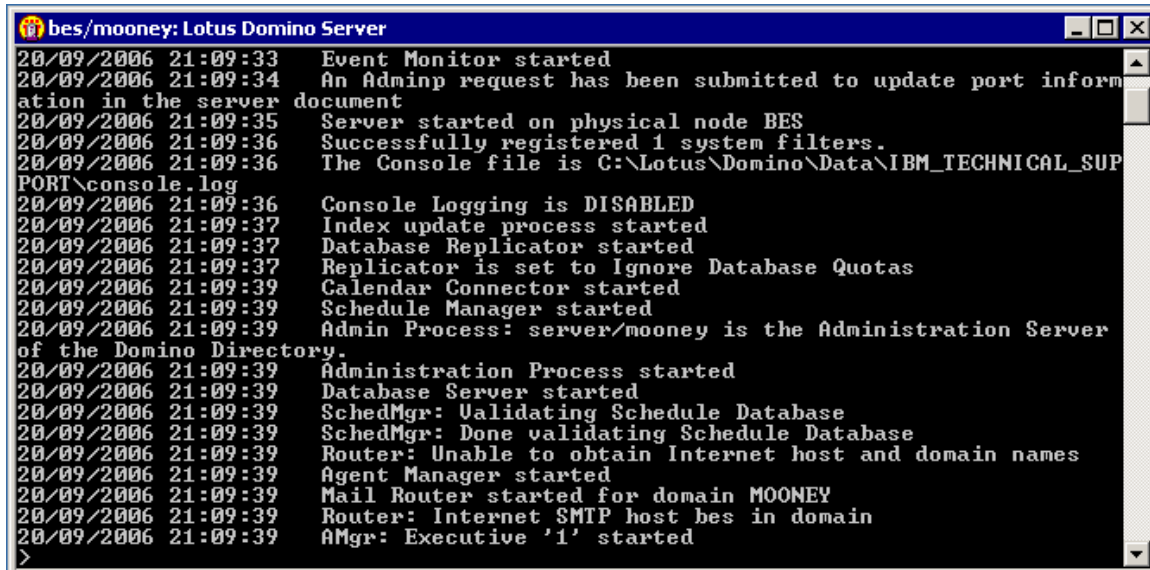
- The database directory under the RIM installation (Example C:\Research in Motion\BlackBerry Enterprise Server 4.1.1\Database)
- The SQL Data folder that contains the mdf and ldf files (Example C:\Program Files\Microsoft SQL Server\MSSQL\Data)
- The BES folder under domino\ data (Example C:\Lotus\Domino\Data\BES)
- The BAK file that you created already

### **3.3 Third thing to do**

In the DATABASE folder you took a copy of, there is a file called BESMgmt.cfg.. Open it with Notepad.. If the new server has different paths, or database names planned – you MUST change this file to represent the NEW names. To keep it simple, I am matching the names/paths that already existed. By all odds, so have you , if you went with a default install.

## 4.0 Onto the new server

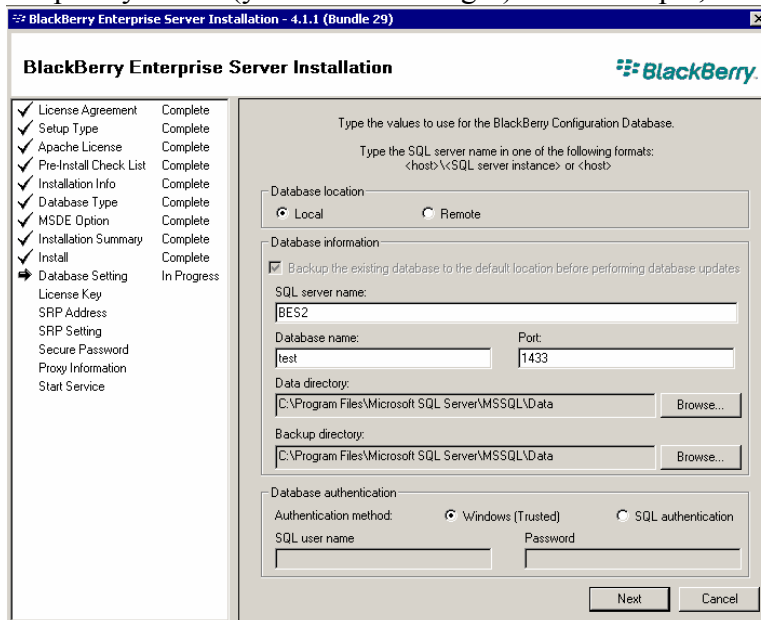
Ok – cut forward to building a new server and resetting up Domino, using the same id file etc. I have built a new plain VM image of a win2k server and re-setup domino 654. And here she is....



```
bes/mooney: Lotus Domino Server
20/09/2006 21:09:33 Event Monitor started
20/09/2006 21:09:34 An Adminp request has been submitted to update port information in the server document
20/09/2006 21:09:35 Server started on physical node BES
20/09/2006 21:09:36 Successfully registered 1 system filters.
20/09/2006 21:09:36 The Console file is C:\Lotus\Domino\Data\IBM_TECHNICAL_SUPPORT\console.log
20/09/2006 21:09:36 Console Logging is DISABLED
20/09/2006 21:09:37 Index update process started
20/09/2006 21:09:37 Database Replicator started
20/09/2006 21:09:37 Replicator is set to Ignore Database Quotas
20/09/2006 21:09:39 Calendar Connector started
20/09/2006 21:09:39 Schedule Manager started
20/09/2006 21:09:39 Admin Process: server/mooney is the Administration Server of the Domino Directory.
20/09/2006 21:09:39 Administration Process started
20/09/2006 21:09:39 Database Server started
20/09/2006 21:09:39 SchedMgr: Validating Schedule Database
20/09/2006 21:09:39 SchedMgr: Done validating Schedule Database
20/09/2006 21:09:39 Router: Unable to obtain Internet host and domain names
20/09/2006 21:09:39 Agent Manager started
20/09/2006 21:09:39 Mail Router started for domain MOONEY
20/09/2006 21:09:39 Router: Internet SMTP host bes in domain
20/09/2006 21:09:39 AMgr: Executive '1' started
>
```

### 4.1 Install BES (again)

So, first things first... Install the new BES server on the box (I assume you know that part). Go through the entire installation but call the SQL database you create some temporary name..(you wont be using it). For example, test:



### 4.2 Importing the old database onto the new installation

Ok, the server is installed. Now you need to get the old SQL database onto the new server and tell BES to use that instead

Go to the temp folder in command prompt on the new server – there should be a directory called database. Type in  
Createdb.exe BESMgmt.cfg

## Moving a Bes Server

```
C:\WINNT\system32\cmd.exe
Processing LoadWorkDefns.sql...
Finished LoadWorkDefns.sql.

Processing LoadObjectDefns.sql...
Finished LoadObjectDefns.sql.

Processing LoadServiceBookTemplates.sql...
Finished LoadServiceBookTemplates.sql.

Processing LoadESPDefaults.sql...
Finished LoadESPDefaults.sql.

Processing SchedulePurgeJobs.sql...
Finished SchedulePurgeJobs.sql.

Processing LoadDBVersion.sql...
Finished LoadDBVersion.sql.

Schema installation successfully completed

Result of call to BESDBInstaller: Success.

C:\temp\Database>
```

This has created a blank database with the BES config required.

Now you need to detach this database. Type in at the command prompt

osql -E

```
C:\WINNT\system32\cmd.exe - osql -E
Finished LoadObjectDefns.sql.

Processing LoadServiceBookTemplates.sql...
Finished LoadServiceBookTemplates.sql.

Processing LoadESPDefaults.sql...
Finished LoadESPDefaults.sql.

Processing SchedulePurgeJobs.sql...
Finished SchedulePurgeJobs.sql.

Processing LoadDBVersion.sql...
Finished LoadDBVersion.sql.

Schema installation successfully completed

Result of call to BESDBInstaller: Success.

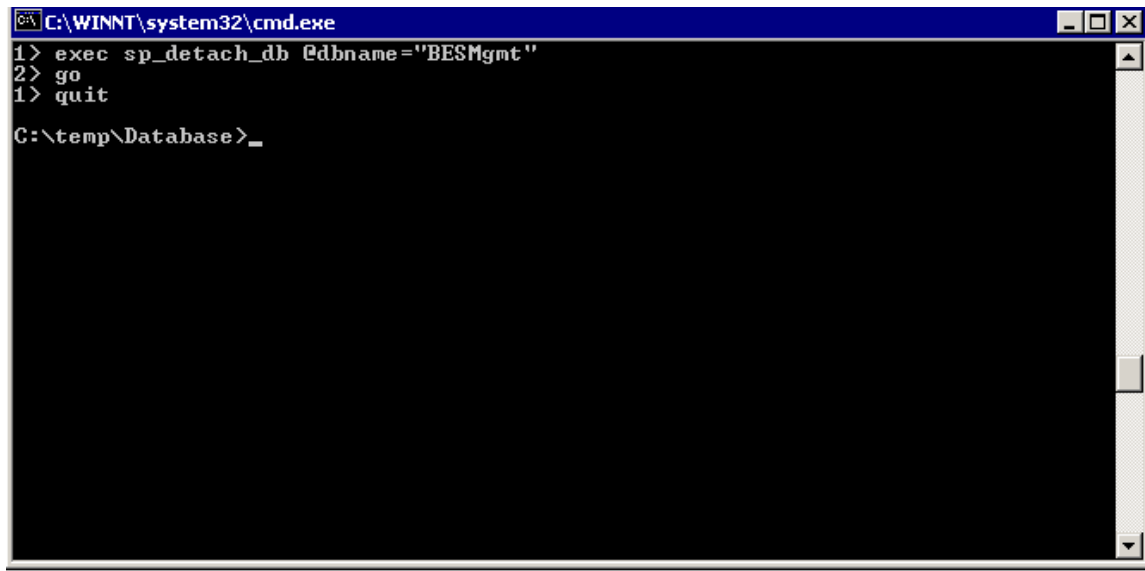
C:\temp\Database>osql -e
Error: No user selected. Try with -U or -E switches

C:\temp\Database>osql -E
1>
```

Type in the following:

```
exec sp_detach_db @dbname = "<database_name>"
then type in
go
then
quit
```

## Moving a Bes Server



```
C:\WINNT\system32\cmd.exe
1> exec sp_detach_db @dbname='BESMgmt'
2> go
1> quit
C:\temp\Database>_
```

### **4.4 Copy in the MDF files**

Go to the data directory in the TEMP folder – copy all the mdf and ldf files into the MS SQL data directory (C:\Program Files\Microsoft SQL Server\MSSQL\Data)

### **4.5 Attach the database you created**

Type in osql -E in a command prompt

Type in the following

```
1> EXEC sp_attach_db @dbname = '<database_name>',
2> @filename1 = 'C:\Program Files\Microsoft SQL
Server\MSSQL\Data\<database_name>.mdf',
3> @filename2 = 'C:\Program Files\Microsoft SQL
Server\MSSQL\Data\<database_name>log.ldf'
4> go
1> quit
```

## Moving a Bes Server

```
C:\WINNT\system32\cmd.exe
1> EXEC sp_attach_db @dbname=' BESMgmt',
2> @filename1 = 'c:\Program files\Microsoft SQL Server\MSSQL\Data\BESMgmt.mdf',
3> @filename2 = 'C:\Program Files\Microsoft SQL Server\MSSQL\Data\BESMgmt.1df',
4> go
1> quit

C:\temp\Database>
```

### 4.6 Tell BES to use the other database

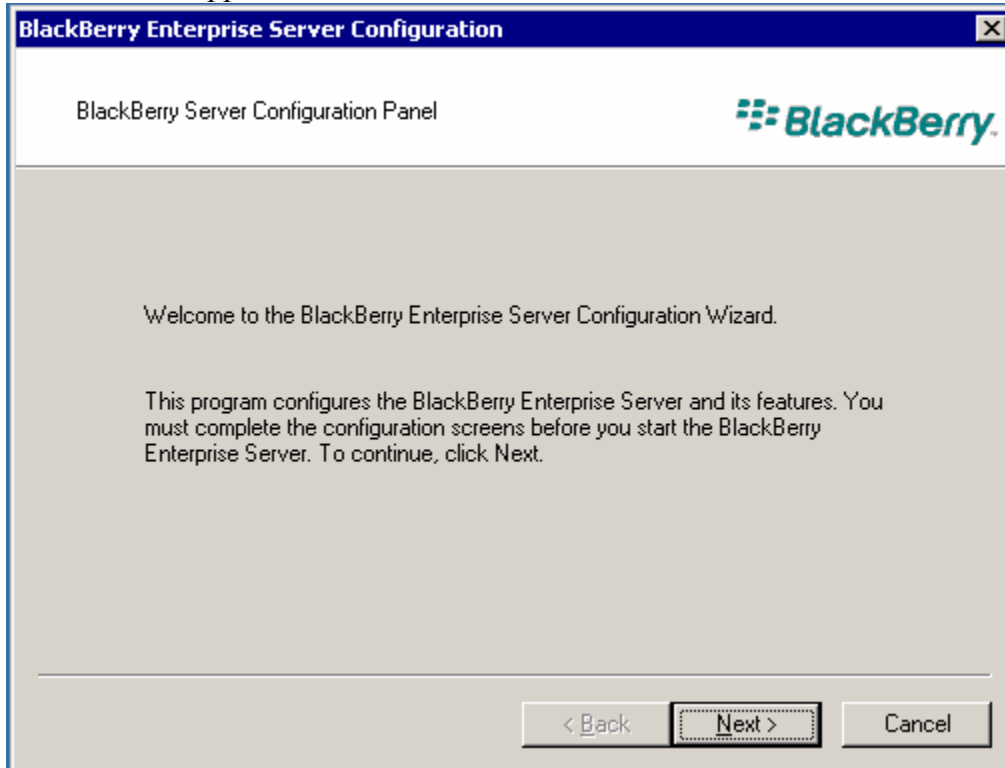
Open the Blackberry Server configuration panel

The screenshot shows the BlackBerry Server Configuration Panel. At the top, there is a title bar with the text "BlackBerry Server Configuration" and a help icon. Below the title bar, the text "BlackBerry Server Configuration Panel" is displayed next to the BlackBerry logo. The main content area is divided into several sections. The first section is a grid of tabs: "BlackBerry Router", "Proxy Settings", "Mobile Data Service", "MDS Advanced", "Attachment Server", "Secure Connection", "Database Connectivity", "BlackBerry Server", and "Logging". The "Database Connectivity" tab is selected. Below the tabs, there is a paragraph of text: "Please enter information that the BlackBerry Software will use to connect to the administrative database. The name specified can refer to an existing database, or a new one. Click 'Test SQL Server Connection' to verify the connection." The next section is titled "SQL Information" and contains two input fields: "SQL Server:" with the value "BES2" and "Database:" with the value "test". Below these fields is a button labeled "Change Database". The final section is titled "Authentication" and contains a "Method:" label with two radio buttons: "Windows (Trusted)" (which is selected) and "SQL Authentication". Below the radio buttons are two input fields: "User Name:" and "Password:". At the bottom of the form is a button labeled "Test SQL Server Connection".

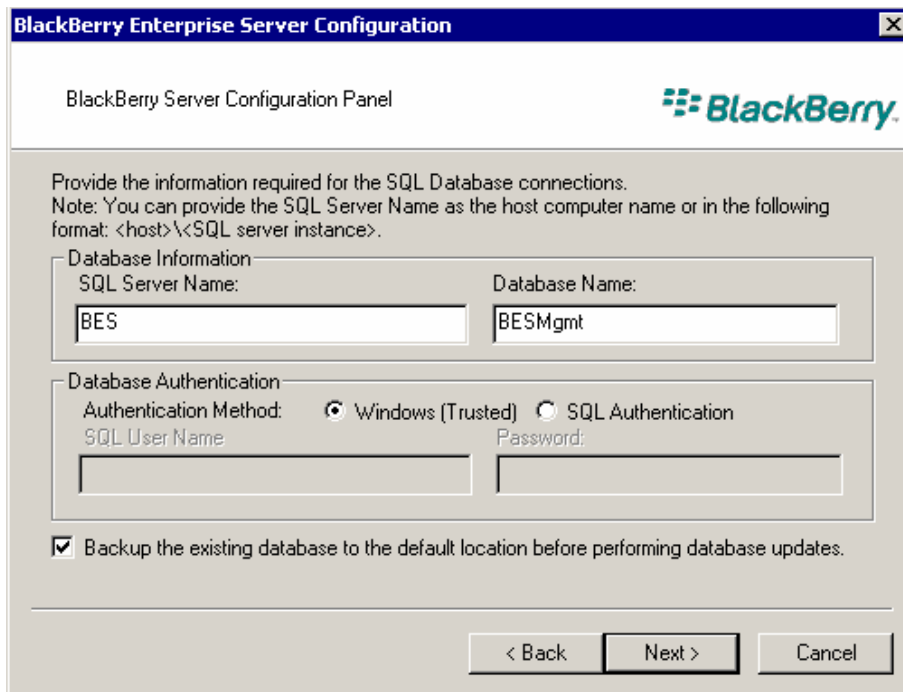
## Moving a Bes Server

Click on CHANGE DATABASE and then on YES

A new wizard appears – click on NEXT



Type in the server and database name. In my case it is BES and BESMgmt

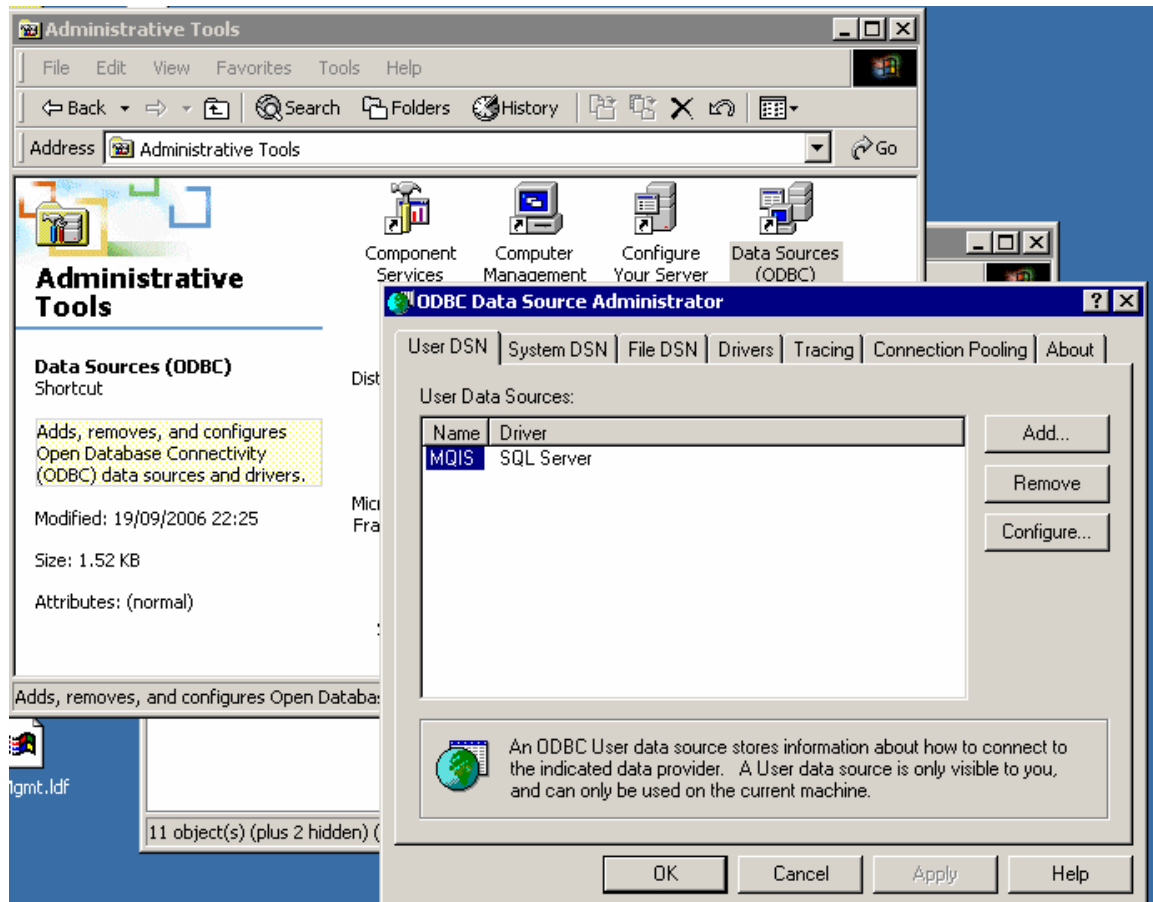


Moving a Bes Server

Go through the rest of the wizard as before and start the services

## 4.7 Configure Data Source

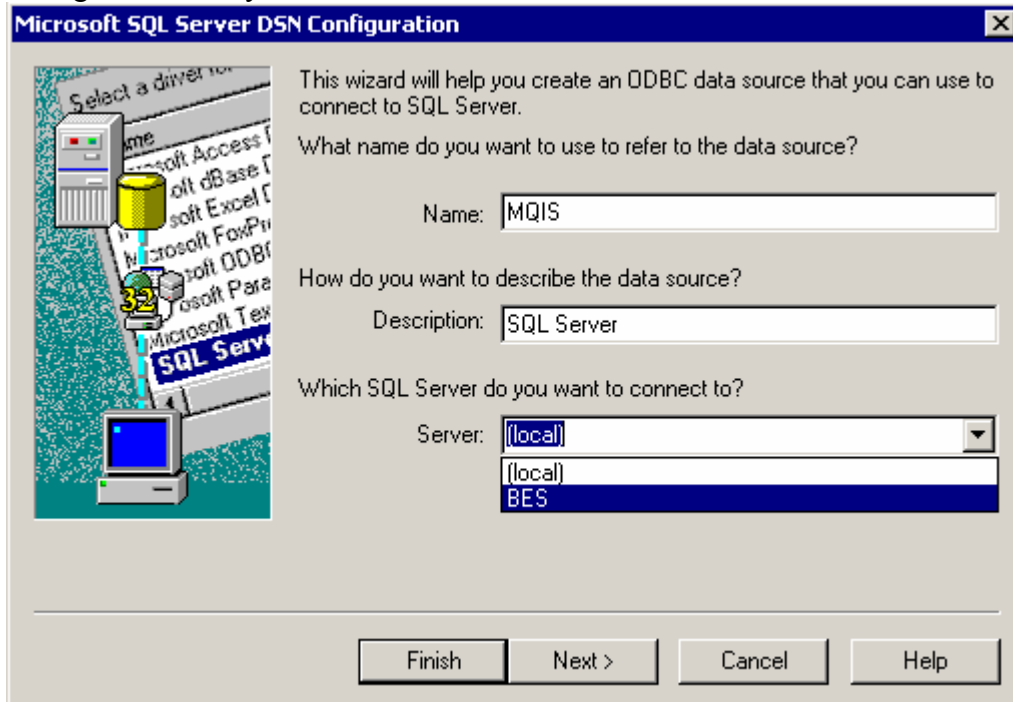
Open the ODBC Data source connector under administrative tools



## Moving a Bes Server

### Choose Configure

Change the server you want to connect to field to BES2



**Microsoft SQL Server DSN Configuration**

This wizard will help you create an ODBC data source that you can use to connect to SQL Server.

What name do you want to use to refer to the data source?

Name:

How do you want to describe the data source?

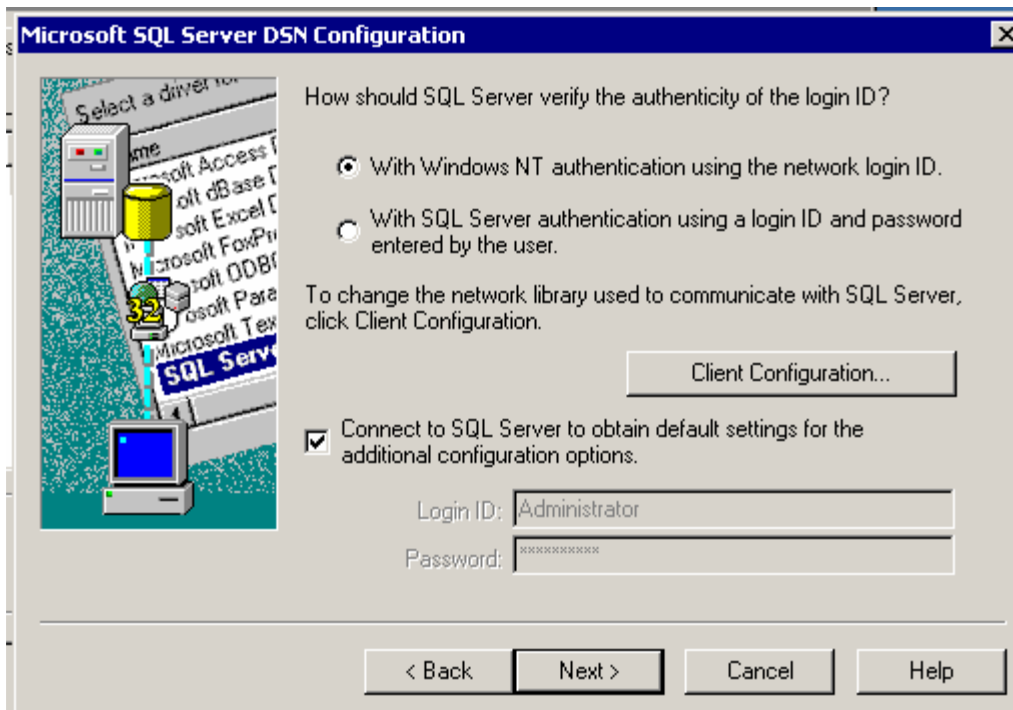
Description:

Which SQL Server do you want to connect to?

Server:

Finish    Next >    Cancel    Help

Ensure the authentication fields are correct



**Microsoft SQL Server DSN Configuration**

How should SQL Server verify the authenticity of the login ID?

With Windows NT authentication using the network login ID.  
 With SQL Server authentication using a login ID and password entered by the user.

To change the network library used to communicate with SQL Server, click Client Configuration.

Connect to SQL Server to obtain default settings for the additional configuration options.

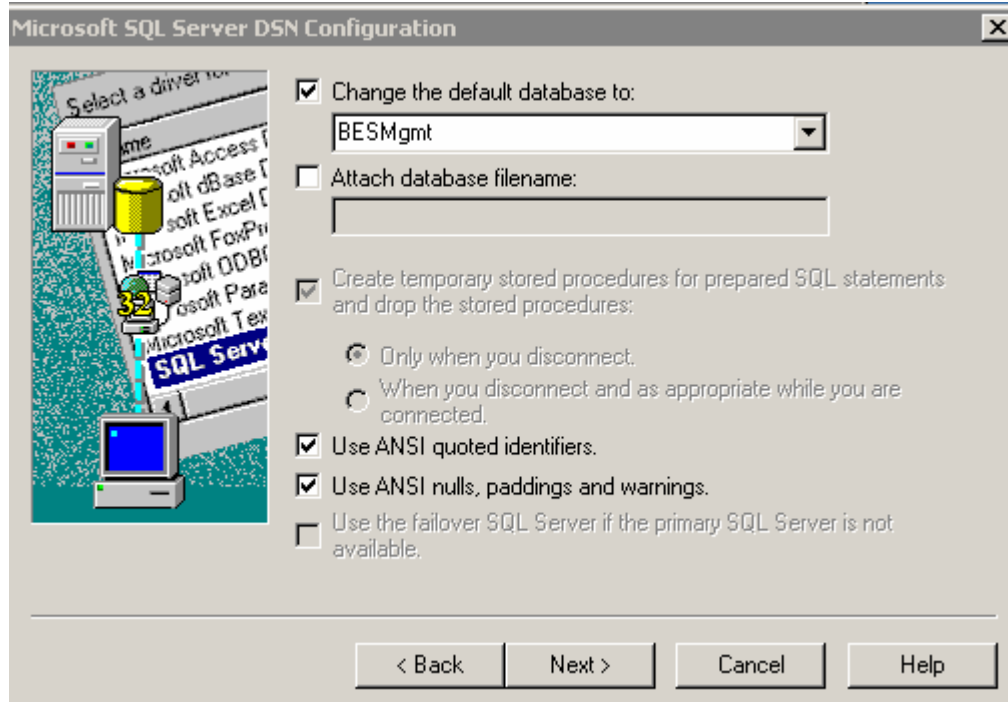
Login ID:

Password:

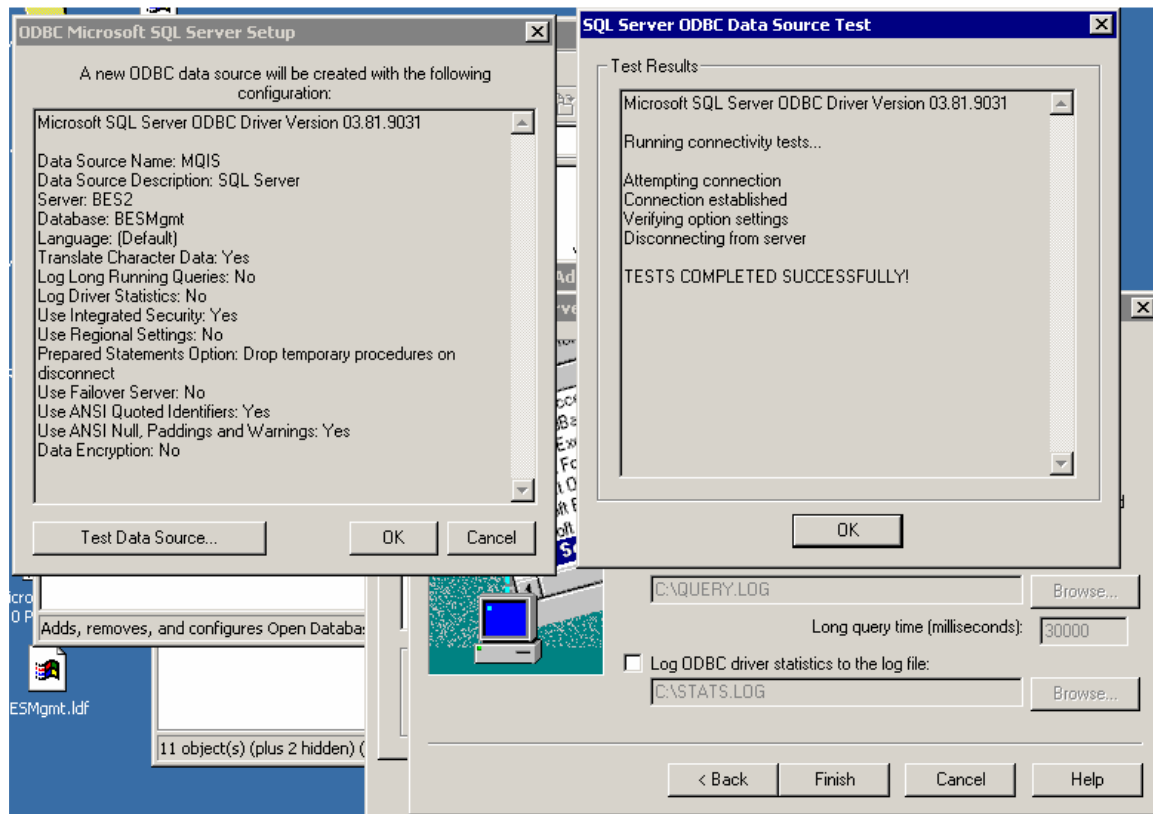
< Back    Next >    Cancel    Help

## Moving a Bes Server

### Change the default database to BESMgmt



### Click on FINISH and TEST DATA SOURCE



Moving a Bes Server

Restart and (with luck) you are done!