

# Implementing Lotus Traveler

Paul Mooney  
Blue Wave Technology

# What We'll Cover ...

- The basics
- Installing Traveler
- Configuring the server
- Configuring the policies
- Deploying the client
  - Windows Mobile
  - Nokia
  - iPhone
- Comparisons to other solutions

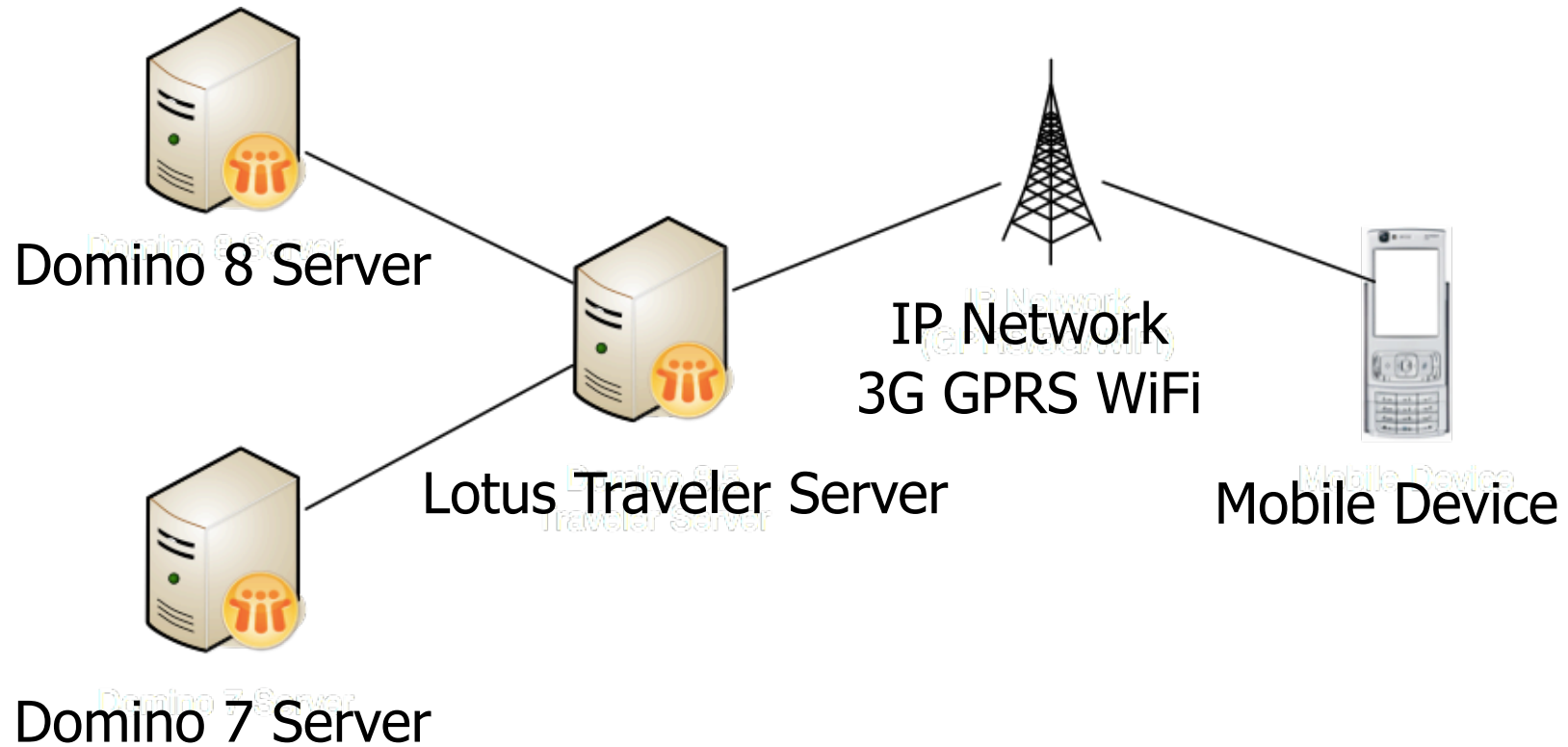
## The bad news

- At Lotusphere, we could demo this live
  - Set it up on a VM using RDP
  - People emailed us to prove it worked
- Not possible this time

# The good news

- I can demo 8.5.1
  - IBM gave approval for admincamp
  - “Thank you Ed Brill”
  
- Latest features
  
- Pros / cons
  
- Experience in beta

# What is Lotus Traveler



## New with 8.5 (and 851)

- Symbian Device support
  - Nokia s60 3rd Edition and 5th Edition
  
- Additional Security
  - Password enforcement
  - Password quality enforcement
  - Inactivity lockout
  - Maximum password attempts
  - Storage card encryption
  - Remote wipe
  
- Better client code
  - Rich text support
  
- iPhone support

## New with 8.5

- Support for servers not using Internet sites
- Settings enforced by Policy
  - Per user configuration is now available
- Encrypted Email support
  - Requires users to import their ID file to their mailfile
- Some client reporting
  - Lotustraveler.nsf shows client types

# Traveler Caveats

- Traveler provides no application support
- You should use an SSL certificate to encrypt the launch site
  - This is now used to upload Notes ID files
  - Communications (i.e. mails to devices) are encrypted by default
- Limited device customisation
  - No support for customising device user interfaces
  - No support to remove applications or restrict ports



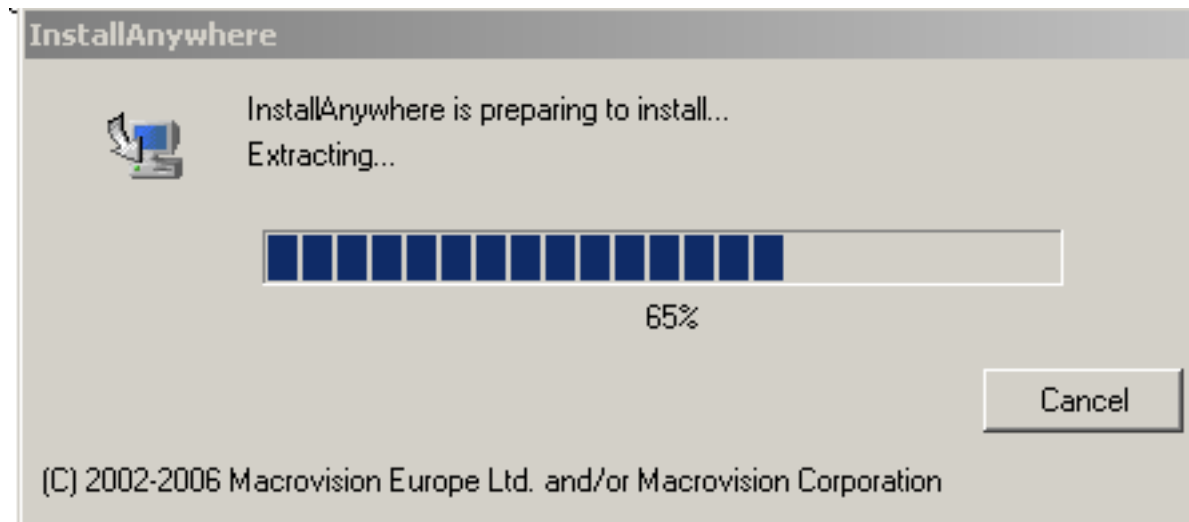
# Traveler Pre-requisites

- Check the pre-requisites are in place
  - All Traveler users must have Internet passwords
  - Traveler server needs Manager access to user mail files
  - Replication of mail file unread marks must be enabled for all servers
  
- Check your firewall settings
  - Auto-sync requires TCP port 8642
  - Sync requires 80 or 443
  
- Synchronise your contacts with your mail file

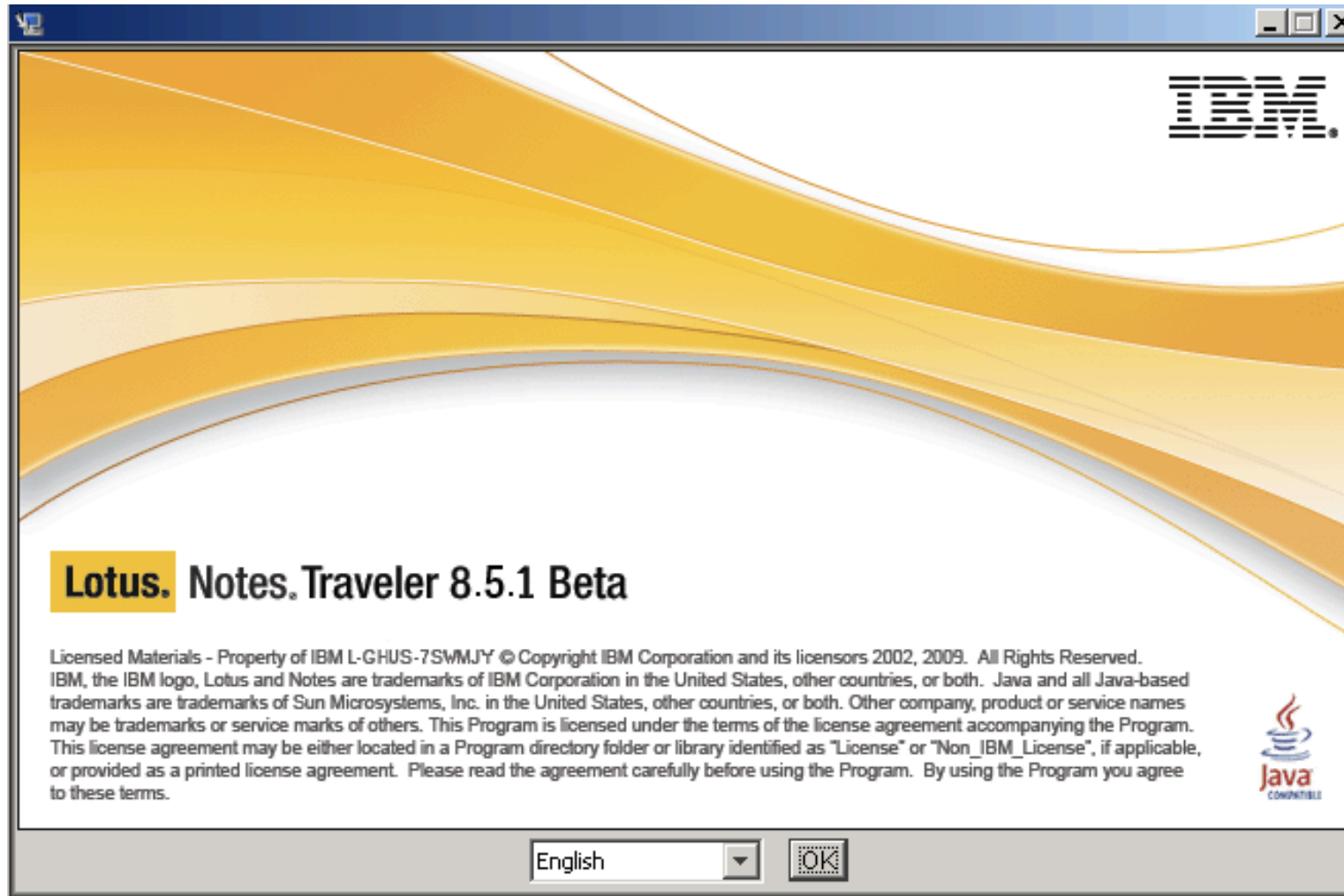
# Installing Traveler

- Separate installation on domino server
- Software is free to licensed users of Domino
- Be aware of the Traveler infocentre
  - [http://publib.boulder.ibm.com/infocenter/domhelp/v8r0/topic/com.ibm.help.Int85.doc/LNT\\_overview.html](http://publib.boulder.ibm.com/infocenter/domhelp/v8r0/topic/com.ibm.help.Int85.doc/LNT_overview.html)
  - ITS VERY GOOD
- Three types of installation
  - Website installation
  - Client installation
  - Both

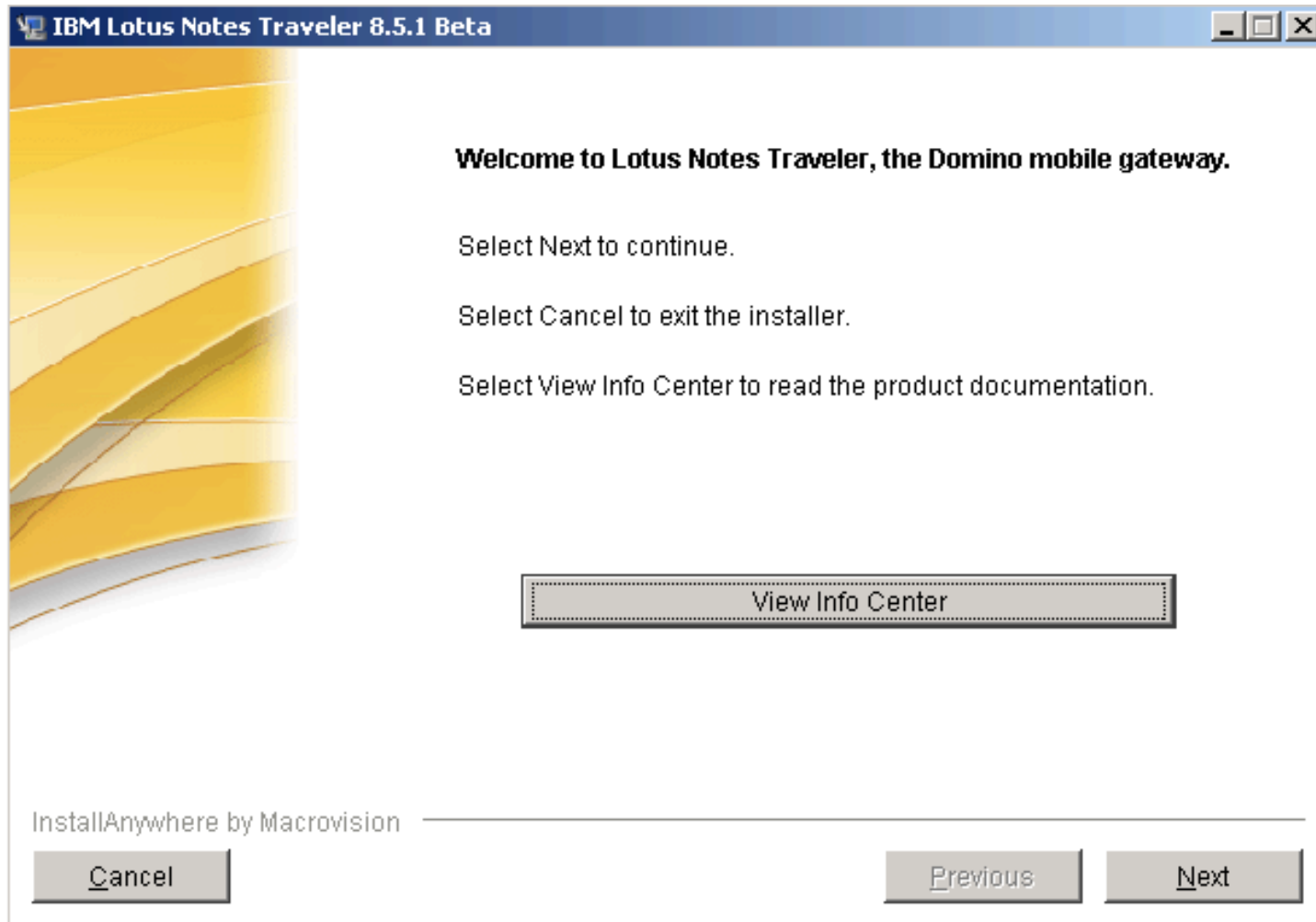
# Installing Traveler



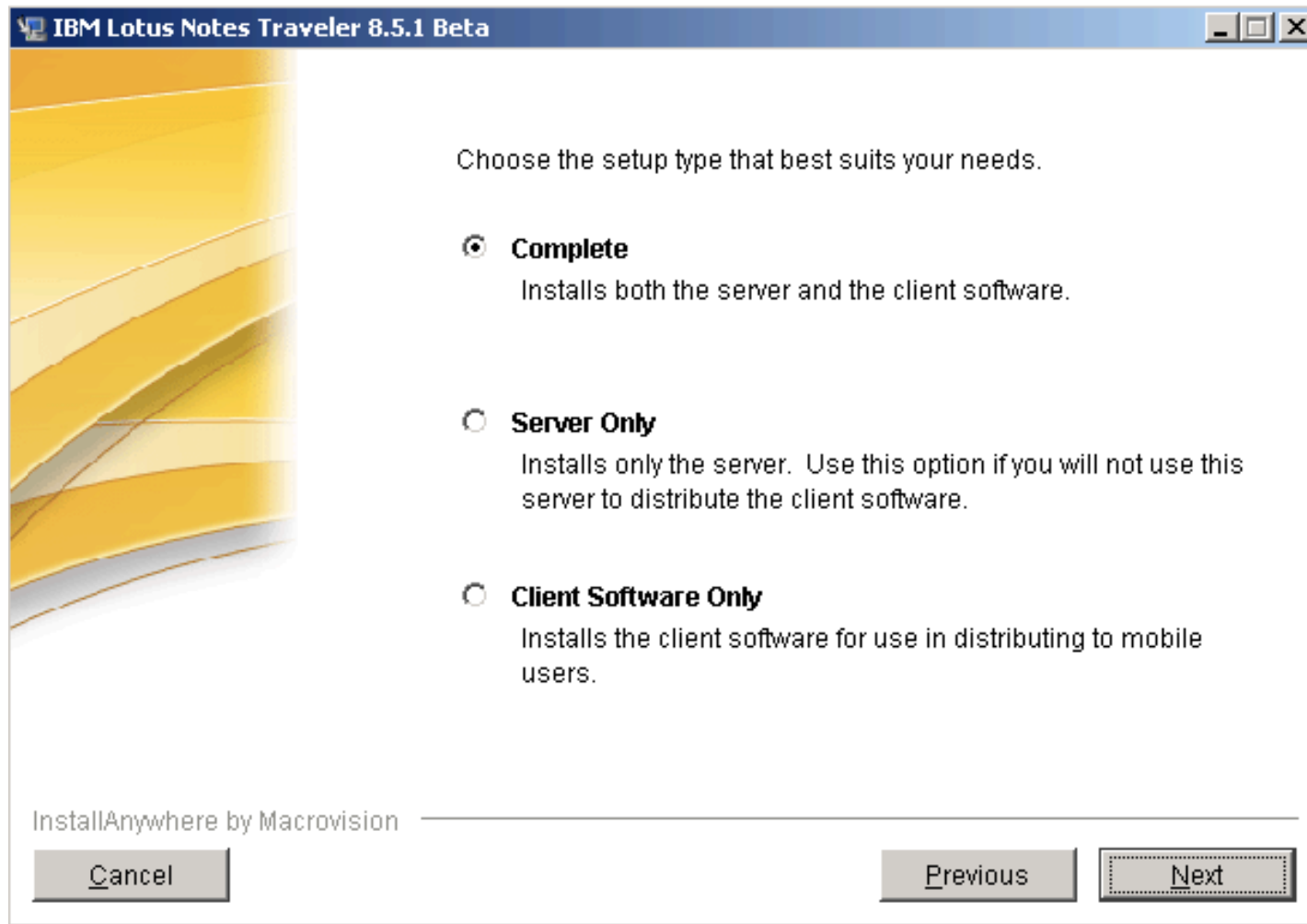
# Installing Traveler



# Installing Traveler



# Installing Traveler



# Installing Traveler

IBM Lotus Notes Traveler 8.5.1 Beta

Please enter the program directory and data directory where you installed your Domino Server.

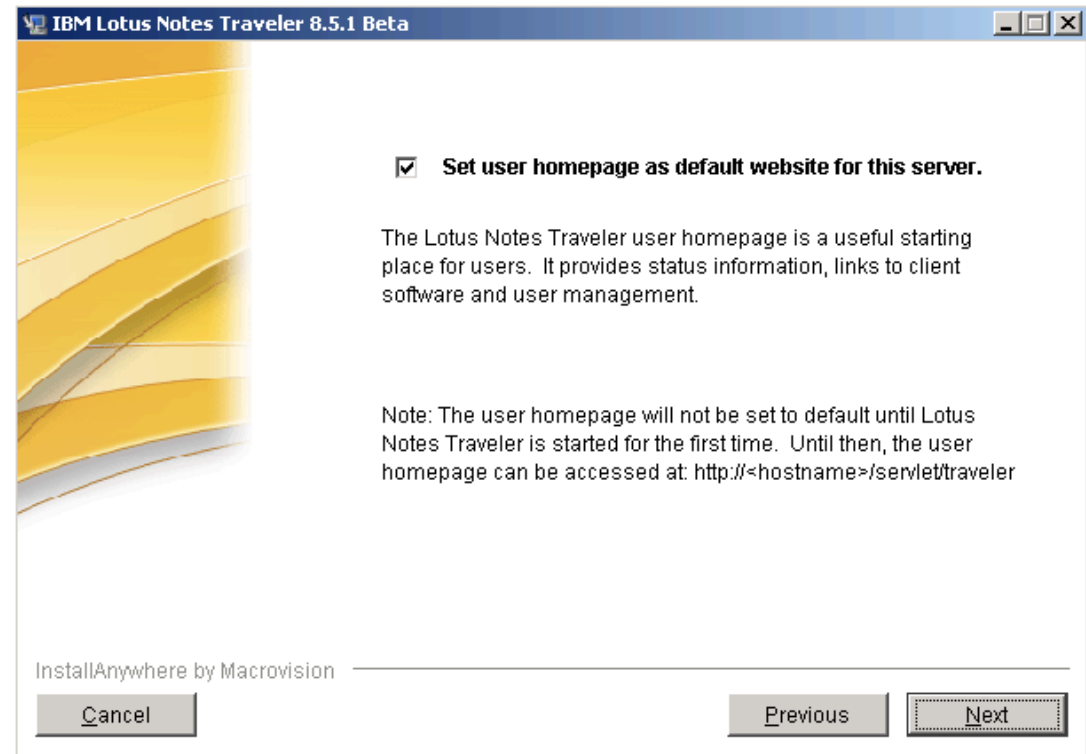
**Program Directory**

**Data Directory**

InstallAnywhere by Macrovision

# Installing Traveler

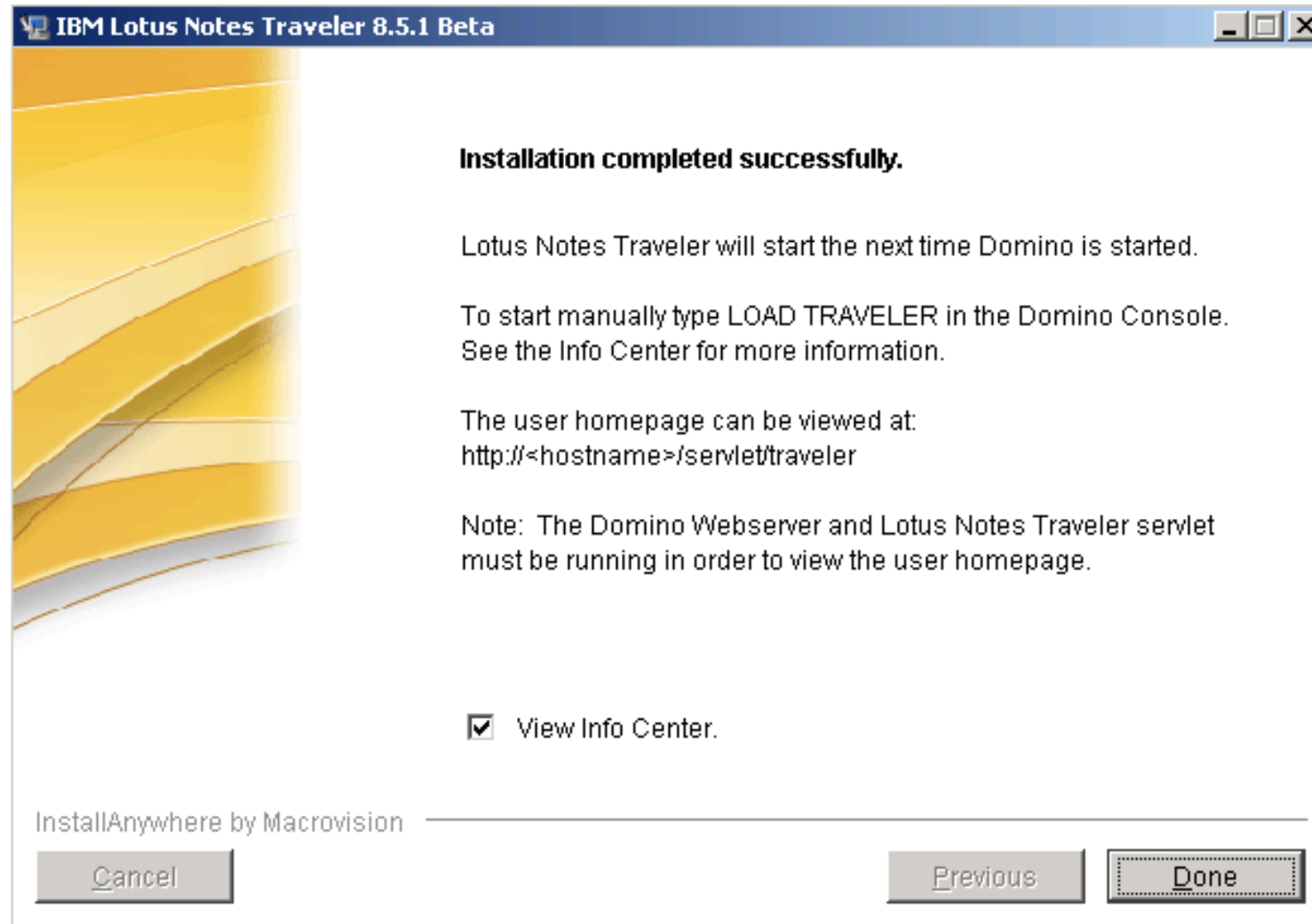
- Setting the homepage
  - Optional feature
  - Is it dedicated?



- If no
- Have an internetsite doc pointing to it
- <http://hostname/servlet/traveler>



# Installing Traveler





# Things to check

- More notes.ini lines

```
NTS_TEMPLATE_INSTALL=0
NTS_AUTO_CONFIG=true
NTS_WEBSITE_HOME=servlet/traveler
NTS_ENABLE_WEB_CLIENT_INSTALL=true
NTS_MAX_HTTP_THREADS=100
NTS_CLASSES=C:\Program Files\IBM\Lotus\Domino\traveler.jar
JavaUserClassesExt=NTS_CLASSES
CONVERTER_LOG_LEVEL=10
DB2_DEFAULT_QV_USER=0
```

- Domino Servlet Manager

Java Servlets	
Java servlet support:	Domino Servlet Manager

- Home URL specified (optional)

Mapping	
Home URL:	servlet/traveler

# Things to check

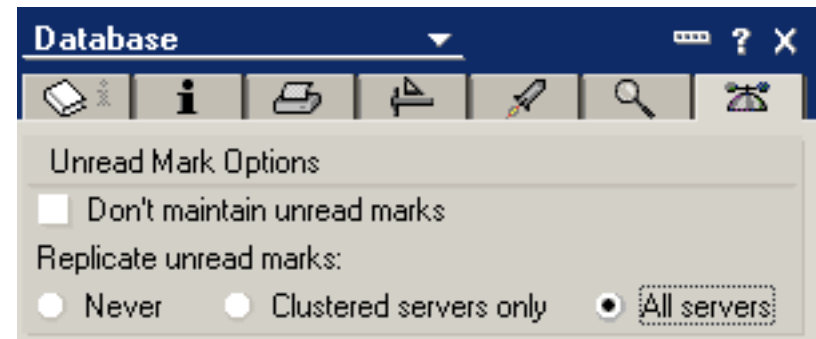
- Max requests per persistent connection > 100

- Input timeout >75 seconds

Timeouts	
HTTP persistent connections:	Enabled
Maximum requests per persistent connection:	100
Persistent connection timeout:	180 seconds
Request timeout:	60 seconds
Input timeout:	75 seconds
Output timeout:	180 seconds
CGI timeout:	180 seconds

# Things to check

- Internet passwords must be specified
- Traveler server requires manager access to mailfile
- Replication of mail file unread marks should be enabled



# Using internet sites?

- Set "Load internet configurations from server/internet sites" to enabled

Load Internet configurations from Server\Internet Sites documents:

Enabled

- HOME URL in internet site document set to servlet/travler

## Default Mapping Rules

Home URL:

servlet/traveler

# Configuring traveler

## ■ Server document

- Traveler tab

## ■ Who can access traveler

- Create group
- Add into access field

Lotus Traveler Access	
Access server:	<input type="checkbox"/> users listed in all trusted directories
	and
	MobileUsers ▾
Not access server:	▾
Remote user commands:	Enabled ▾

## ■ Logging changes

- Default logging is fine
- Do not change log filter from \*

# Configuring traveler

- Polling Interval
  - How often traveler server checks mail files
- Port used
  - For device communication
- Heartbeat initial interval
  - Initial device poll time
  - “keep alive signal”
- Min/Max interval
  - Range used for “keep alive” signals for devices
- Retry interval
  - Schedule re-calculation of “keep alive” intervals
- Offline timeout
  - If no connection in 24 hours “keep alive” polls cease. User can still initiate
- Cleanup timeout
  - After 30 days - device information removed from traveler database

Auto Sync Settings	
Monitor Polling Interval:	3 seconds
Port for TCP Connections:	8642
Heartbeat Algorithm:	Indefinite Detection
Heartbeat Initial Interval:	30 seconds
Heartbeat Algorithm Minimum Interval:	30 seconds
Heartbeat Algorithm Maximum Interval:	15 minutes
Heartbeat Retry Interval:	30 minutes
Device Offline Timeout:	24 hours
User Cleanup Timeout:	30 days



# Traveler policies

- New policy settings for configuring traveler
- Create policy document
  - Or use one you already have
- Create settings document for traveler
- Configure traveler settings

# Traveler settings document

- Sync
  - Choose features to synchronise
  - Choose if “forced” on client

Sync | Filter Settings | Device Settings | Security Settings |

Synchronization Options		How to apply this setting:
<u>Auto Sync:</u>	On ▾	Don't set value ▾
<u>Synchronize:</u>	<input checked="" type="checkbox"/> Email <input checked="" type="checkbox"/> Calendar <input checked="" type="checkbox"/> ToDo <input checked="" type="checkbox"/> Contacts <input checked="" type="checkbox"/> Journal	Don't set value ▾

# Traveler settings document

- Filter settings
- Define mail criteria
  - Limits on attachment sizes/date
- Define Calendar filters
  - Limits date ranges of synchronisation

Mail Filters:	How to apply this setting:	
Email Body Truncation:	<input checked="" type="checkbox"/> Enabled <input type="text" value="5K"/> KB	<input type="text" value="Don't set value"/>
Maximum Email Attachment Size Allowed - Administrator	<input type="text" value="4000"/> KB	<input type="text" value="Don't set value"/>
Email Attachments:	<input type="checkbox"/> Enabled	<input type="text" value="Don't set value"/>
Email Attachment Size:	<input type="text" value="100"/> KB	<input type="text" value="Don't set value"/>
Email Date Filter:	<input checked="" type="checkbox"/> Enabled <input type="text" value="1 Week"/>	<input type="text" value="Don't set value"/>
Email Importance:	<input type="checkbox"/> High Importance Only	<input type="text" value="Don't set value"/>
Other Filters	How to apply this setting:	
Calendar Date Filter:		
Past Events:	<input checked="" type="checkbox"/> Enabled <input type="text" value="1 Week"/>	<input type="text" value="Don't set value"/>
Future Events:	<input checked="" type="checkbox"/> Enabled <input type="text" value="3 Months"/>	<input type="text" value="Don't set value"/>
Journal Date Filter:	<input checked="" type="checkbox"/> Enabled <input type="text" value="1 Week"/>	<input type="text" value="Don't set value"/>
ToDo Status:	<input checked="" type="checkbox"/> Incomplete Status Only	<input type="text" value="Don't set value"/>

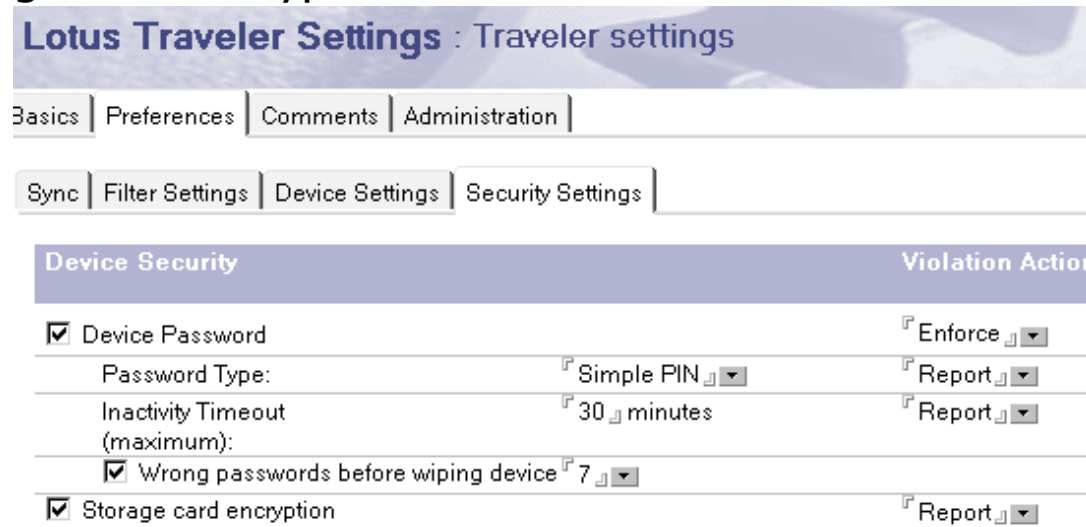
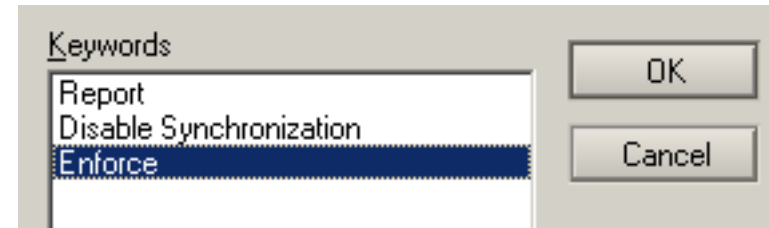
# Traveler settings document

- Device settings
- Logging
  - Define device logging
- Sync details
  - Sync requests over TCP or SMS
  - Disable at low battery level

Basics	Preferences	Comments	Administration
Sync	Filter Settings	Device Settings	Security Settings
Logging Settings		How to apply this setting:	Inherit from parent policy:child policies:
Device Logging Level:	Low ▾	Don't set value ▾	<input type="checkbox"/> Inherit <input type="checkbox"/> Enforce
Maximum Device Log File Size:	2000 ▾ KB	Don't set value ▾	<input type="checkbox"/> Inherit <input type="checkbox"/> Enforce
Advanced Settings			
Auto Sync Network:	TCP Network ▾	Don't set value ▾	<input type="checkbox"/> Inherit <input type="checkbox"/> Enforce
Low Battery Threshold:	20 ▾ percent	Don't set value ▾	<input type="checkbox"/> Inherit <input type="checkbox"/> Enforce

# Traveler settings document

- Device security
- Passwords
  - Force password on device
    - Can be forced or made required to operate on device
  - Password type
  - Inactivity timeout
  - Device wipe after X incorrect passwords
- Force storage card encryption



# User management

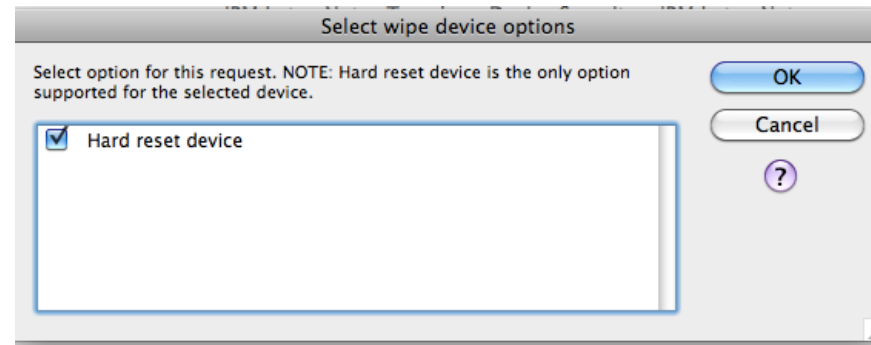
- Lotustraveler.nsf database
  - Stores user/device information
  - Auto populates

Deny Access   Wipe Device   Clear Wipe / Allow Access						
	Device Name	Security Polic	Access	Wipe Option	Wipe Status	Actio
	<b>pmwork</b>					
	Apple-iPhone	No policy	Allow	None		
	<b>Teresa Elsmore/Kimonos</b>					
	Apple-iPhone	No policy	Allow	None		
	<b>Warren Elsmore/Users/Corporate/BEGroup</b>					
	N97	No policy	Allow	None		

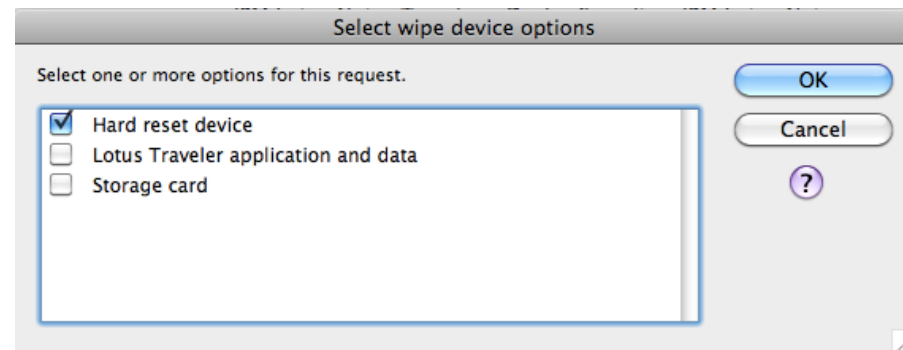
# User management

- Permits control of users
  - Deny access
  - Wipe devices
- Different wipe options per device

- iPhone



- Symbian



# User management by console

- Domino console commands
  - Tell Traveler <command>
- Tell Traveler Help
- Tell Traveler dump <username>
- Tell Traveler showactive
- Tell Traveler version

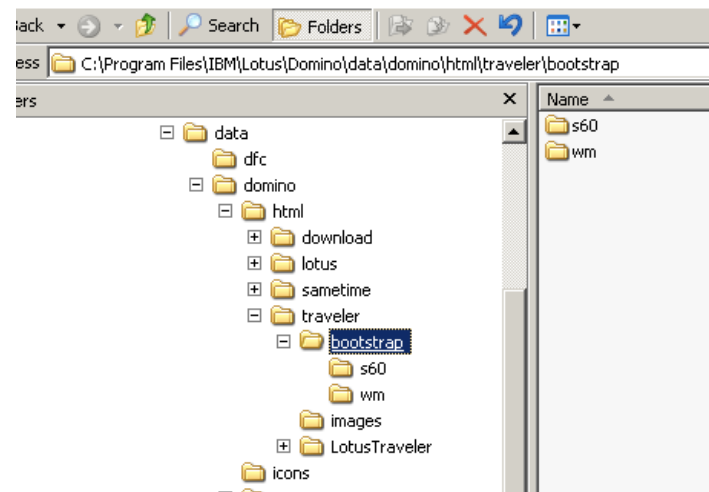


# Deployment

- Browser identified by traveler servlet
- Appropriate software downloaded
  - User enters server name
  - User enters user name
  - User enters password
  - User enters optional sync details

# Automate deployment

- Windows Mobile and Symbian
  - Bootstrap files
  - Contain pre-defined data for deployment
    - e.g. server name
- Templates on domino server
  - User downloads them to documents folder locally before install



# Automate deployment

- Open sample bootstrap files
- Modify defaults
- Save as bootstrap.nts file
- Place link on homepage of site

```
bootstrap_template.nts - Notepad
File Edit Format View Help
<?xml version="1.0" encoding="UTF-8"?>
<!DOCTYPE profiledocument SYSTEM "deviceConfig.dtd">
<profiledocument name='devprofile' username='00000000-0000-0000-0000-000000000000'>
  <item name='devPuserid'><text>@myco.com</text></item>
  <item name='devPprimary'><text>traveler.myco.com</text></item>
  <item name='devPSSL'><text>0</text></item>
  <item name='devPsyncP'><number>80</number></item>
  <item name='devPsyncPS'><number>443</number></item>
  <item name='devPservR'><text>/servlet/traveler</text></item>
  <item name='devPport'><number>8642</number></item>
  <item name='devPvpnenable'><number>1</number></item>
  <item name='devPvpnserver'><text>lmc.myco.com</text></item>
  <item name='devPvpnport'><number>8889</number></item>
  <item name='devPvpnusesame'><number>1</number></item>
  <item name='devPvpnuserid'><text></text></item>
  <item name='devPvpnsavepassword'><number>1</number></item>
  <item name='devPvpnusedefault'><number>1</number></item>
  <item name='devPvpnconnid'><text></text></item>
</profiledocument>
```

# iPhone

- Uses Exchange ActiveSync model
- Connecting to homepage will download all activesync criteria to device
  - User runs through wizard
  - Same as exchange users
- Demo!

## What do those icons mean?



AutoSync off status icon AutoSync off; status nominal.



AutoSync on status icon AutoSync on; status nominal.



Synchronizing status icon Synchronizing with the server.



New mail notification icon New mail message notification.



Cannot reach server status icon Cannot reach the server.



Battery is too low for AutoSync status icon Battery is too low for AutoSync.



No connectivity status icon No device connectivity.



General error message status icon General error message.



Security error message status icon Device security problem, autosync and synchronization are disabled.



Flight mode status icon Device is in flight mode so autosync and synchronization are disabled.

# Comparing with other solutions

- Traveler is free
  - You get what you pay for
- It works, and works well
  - High memory footprint on initial load
  - Not rolled out in anger yet
- Not an application service
  - MSuite, BES etc
- Not as controlled
  - BES is the “daddy”
  - Multi layer policies

## Thank you...

pmooney@pmooney.net	(geekmail)
pmooney.net	(geeksite)
www.twitter.com/pmooneynet	(geektweets)
bleedyellow.com	(geekchat)
paul_mooney@hotmail.com	(geekmsn)
pmooney.net (skype)	(geekcall)
<u>www.facebook.com/pmooneynet</u>	(geekfriends)
www.bluewave.ie	(worksite)
paul.mooney@bluewave.ie	(workmail)
paul.mooney@besystems.eu	(moreworkmail)